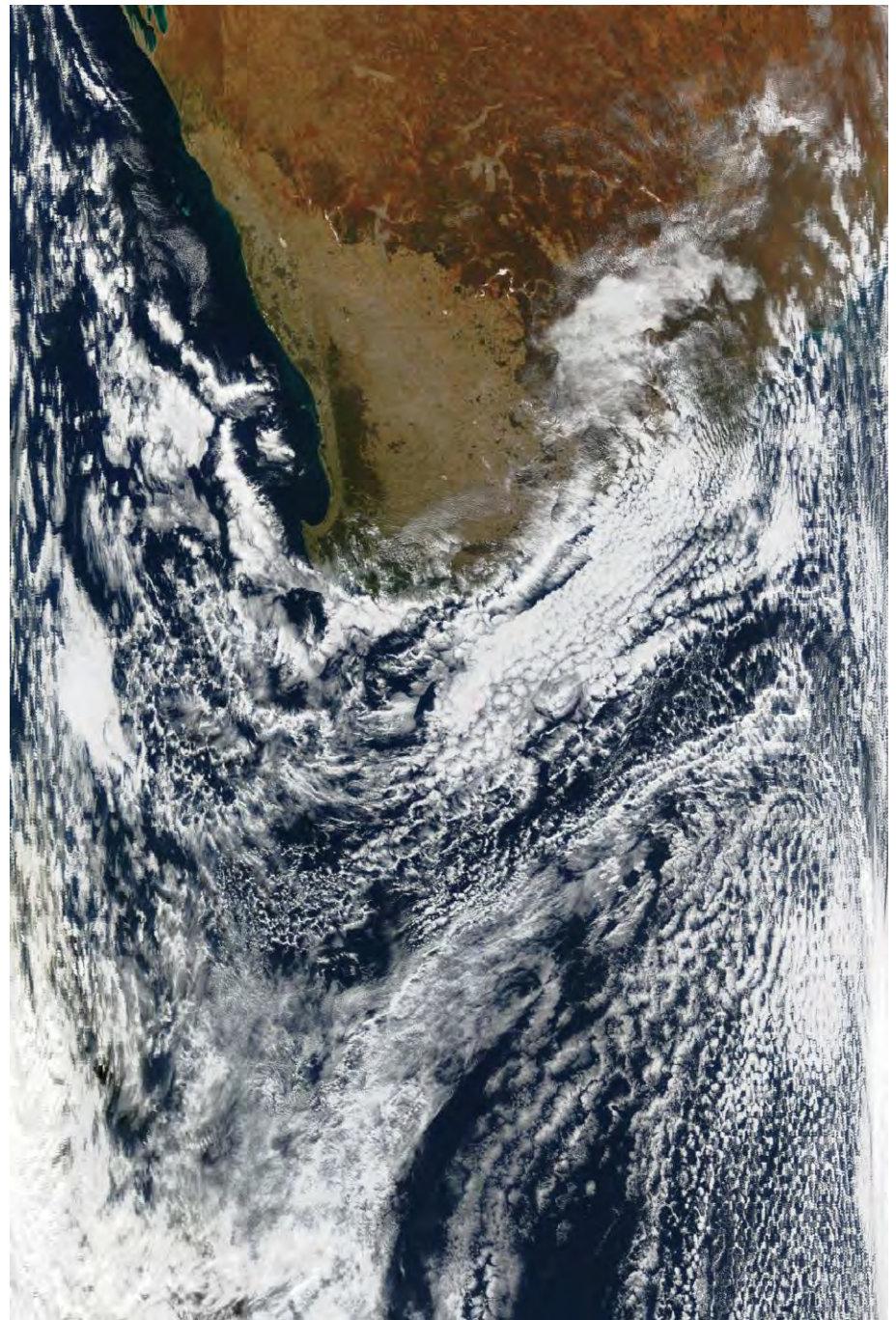


Terra MODIS Images by Band

Terra, 15 May 2001, 0225 UTC

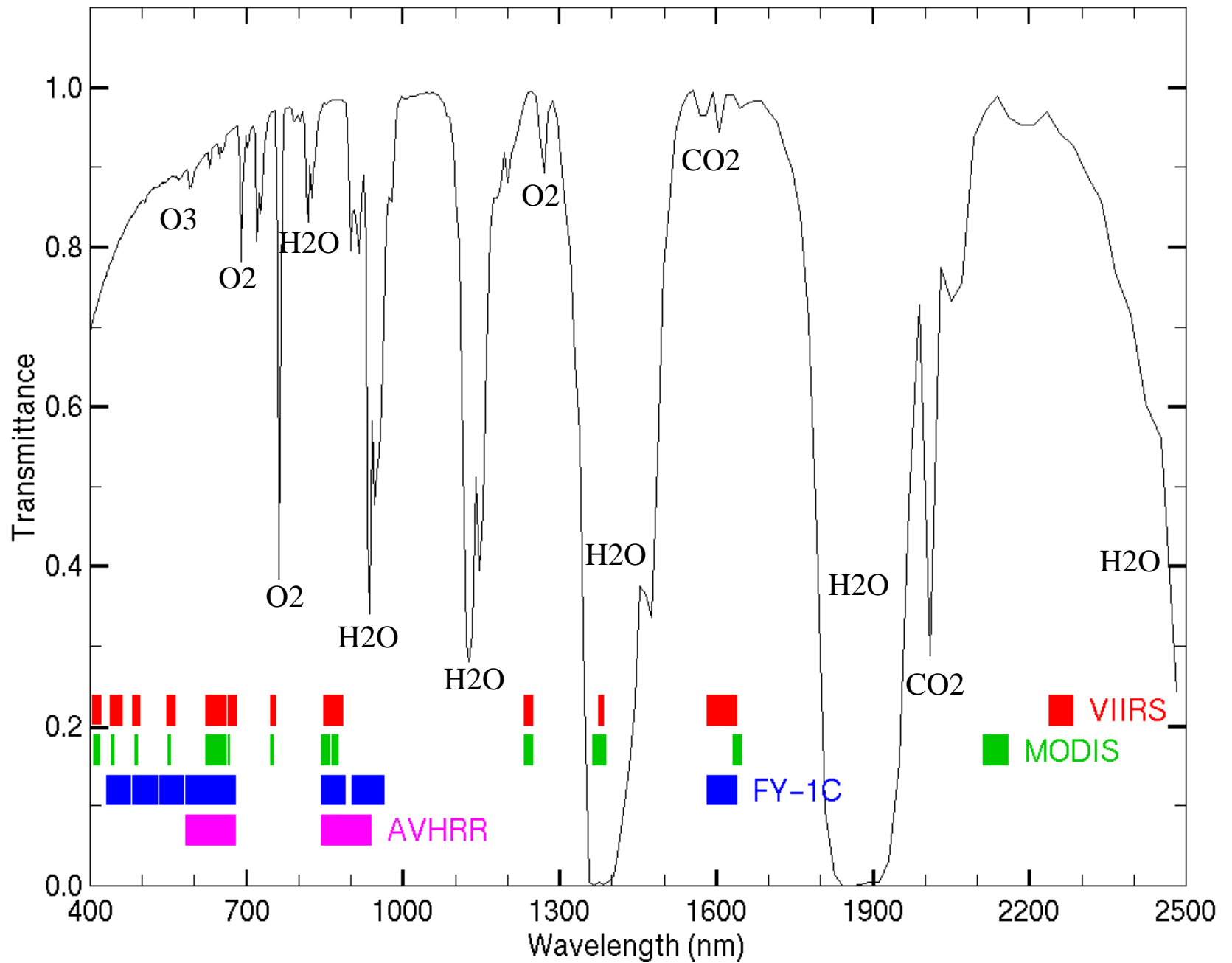
Drought in Southwest WA



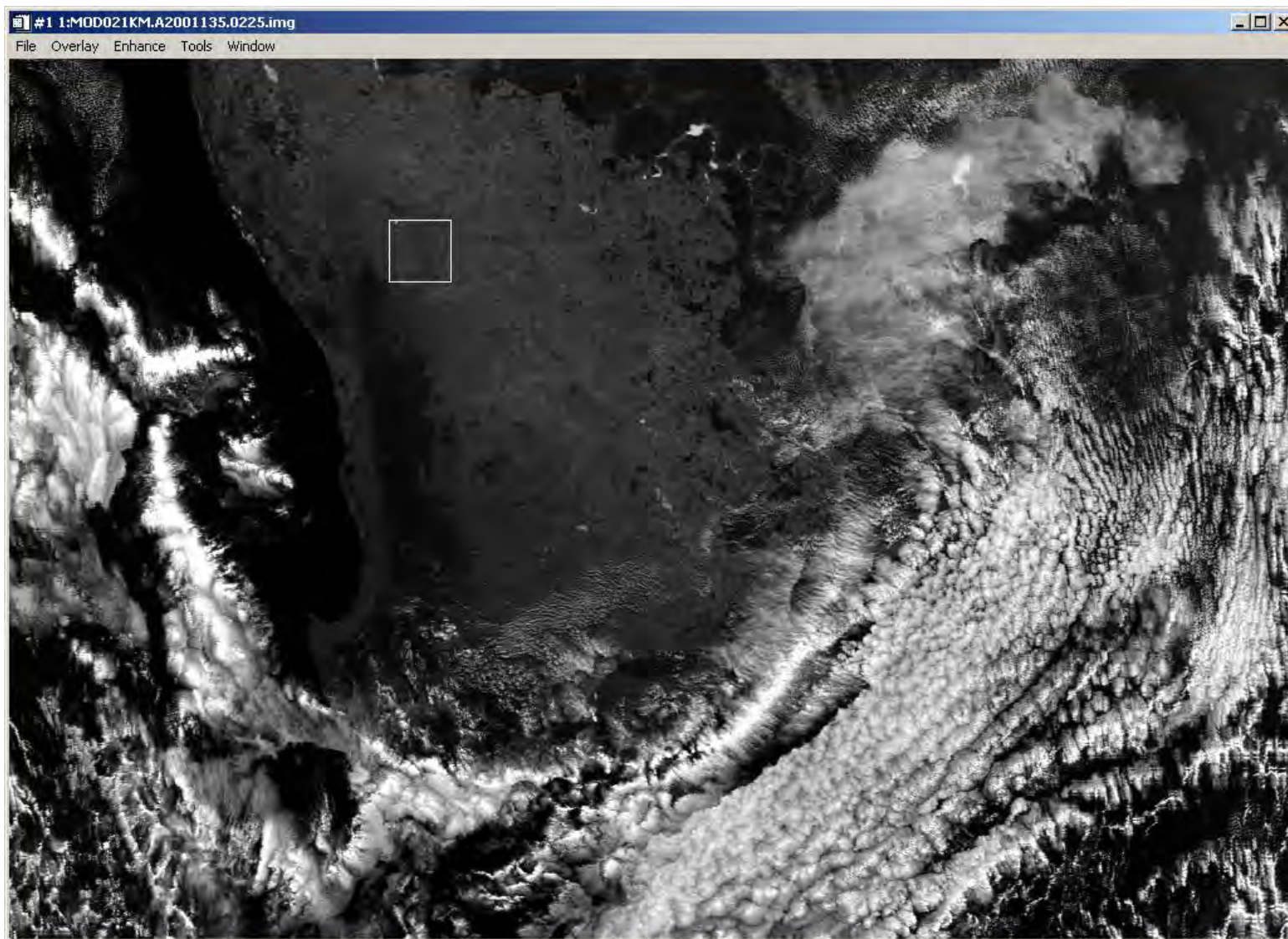
MODIS Reflective Band Specifications

Primary Use	Band	Bandwidth ¹	Spectral Radiance ²	Required SNR ³
Land/Cloud/Aerosols Boundaries	1	620 - 670	21.8	128
	2	841 - 876	24.7	201
Land/Cloud/Aerosols Properties	3	459 - 479	35.3	243
	4	545 - 565	29.0	228
	5	1230 - 1250	5.4	74
	6	1628 - 1652	7.3	275
	7	2105 - 2155	1.0	110
Ocean Color/ Phytoplankton/ Biogeochemistry	8	405 - 420	44.9	880
	9	438 - 448	41.9	838
	10	483 - 493	32.1	802
	11	526 - 536	27.9	754
	12	546 - 556	21.0	750
	13	662 - 672	9.5	910
	14	673 - 683	8.7	1087
	15	743 - 753	10.2	586
	16	862 - 877	6.2	516
Atmospheric Water Vapor	17	890 - 920	10.0	167
	18	931 - 941	3.6	57
	19	915 - 965	15.0	250

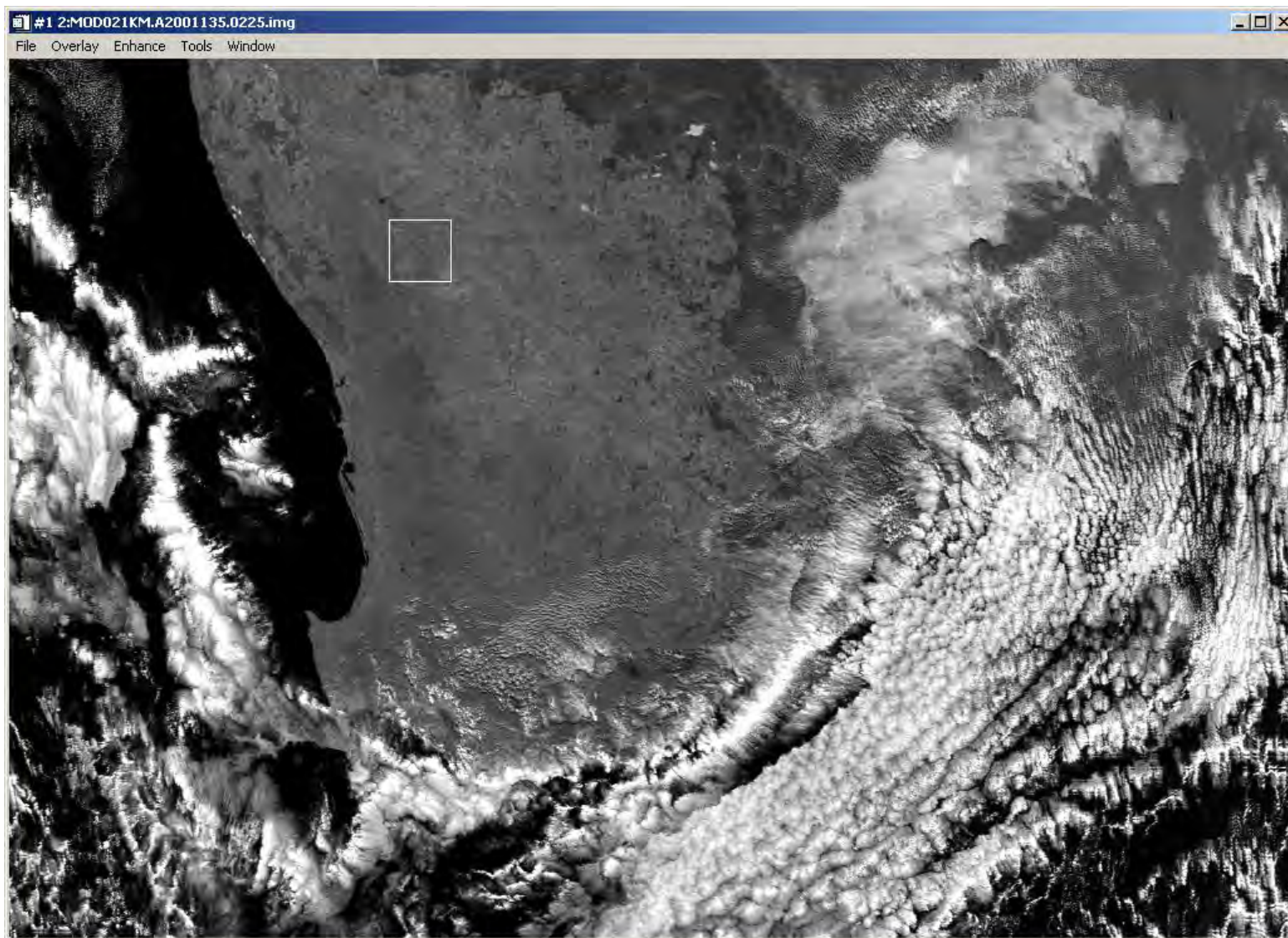
VIIRS, MODIS, FY-1C, AVHRR



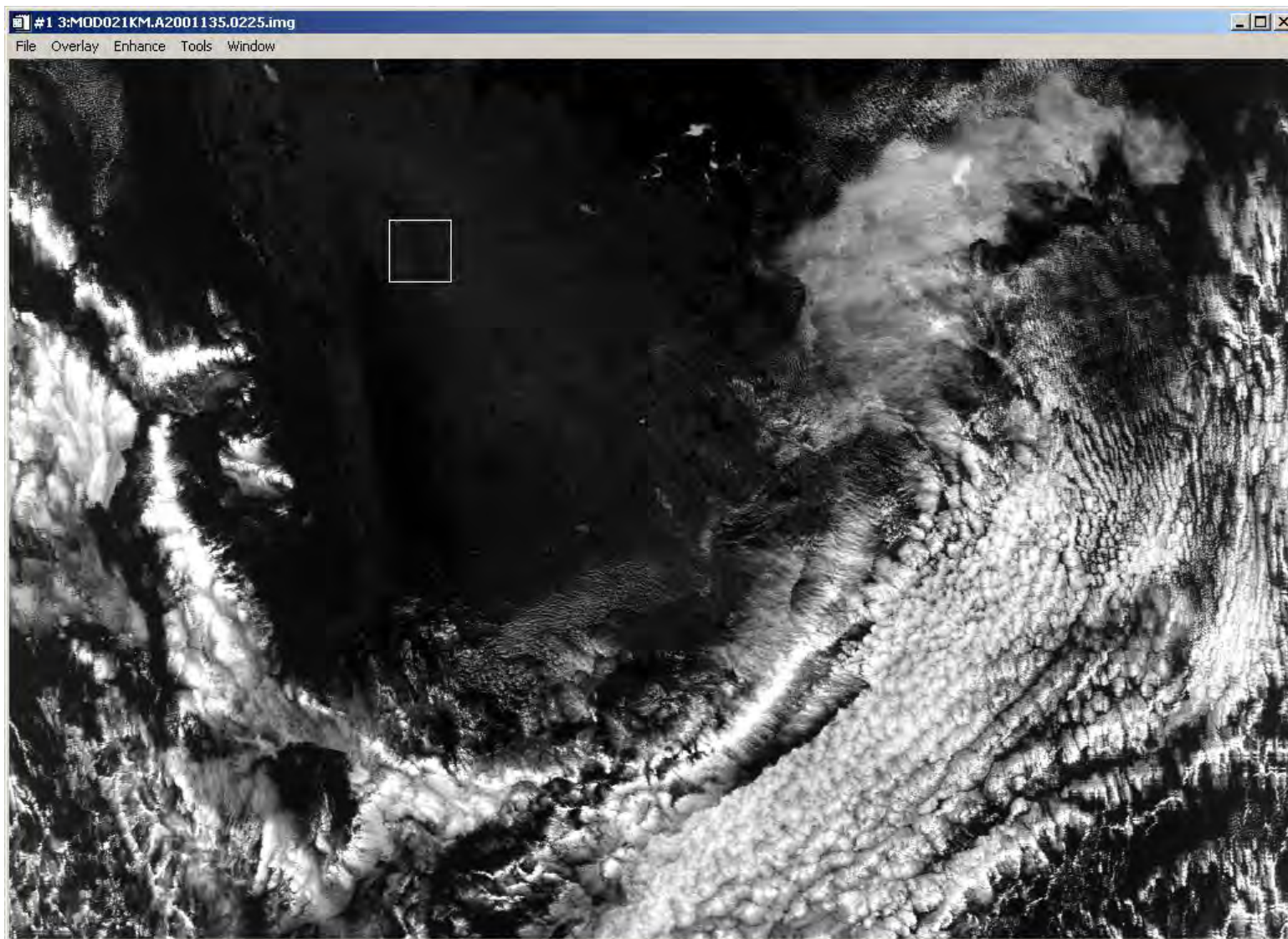
Band 1 (0.66 μm)



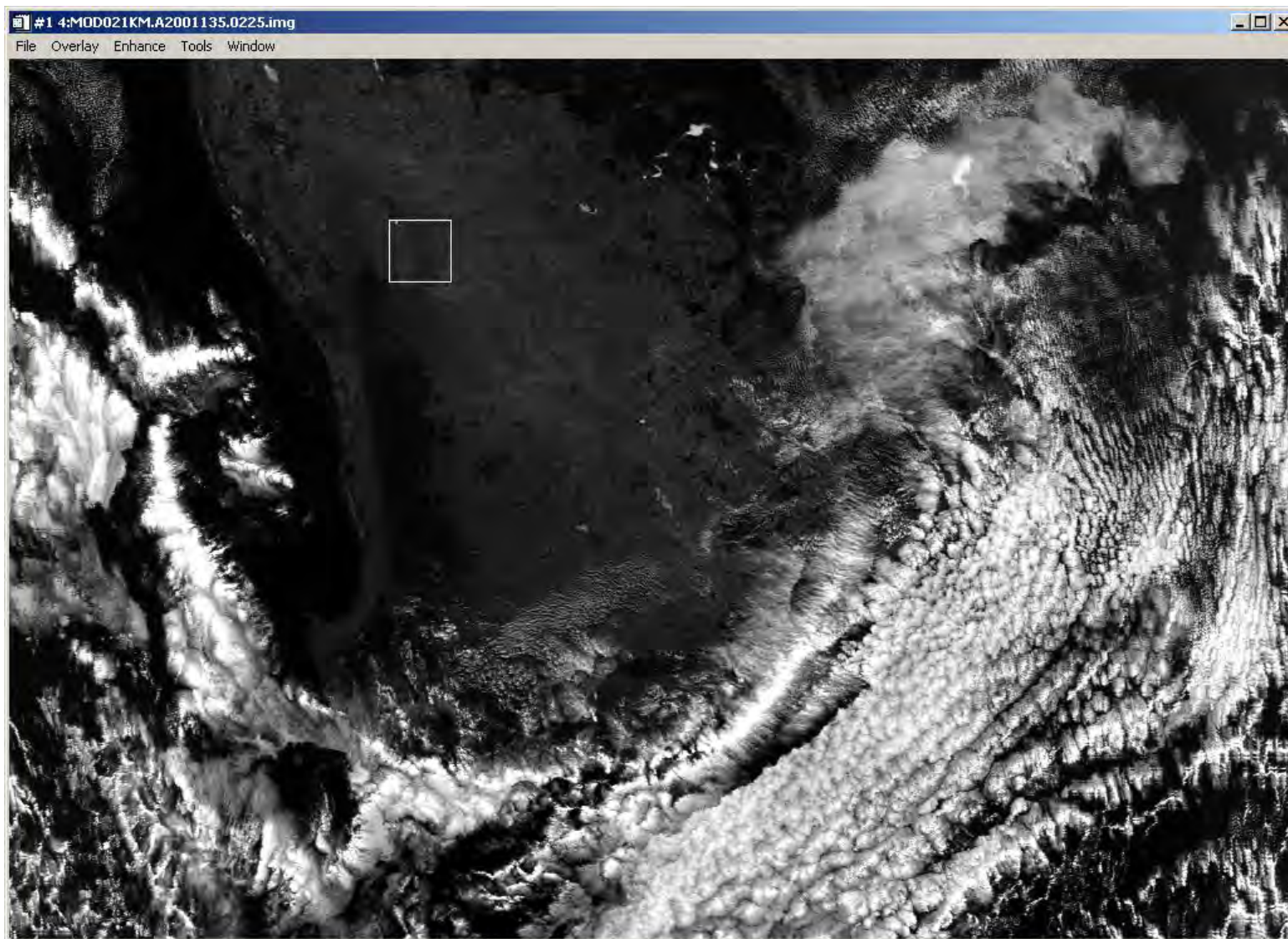
Band 2 (0.87 μm)



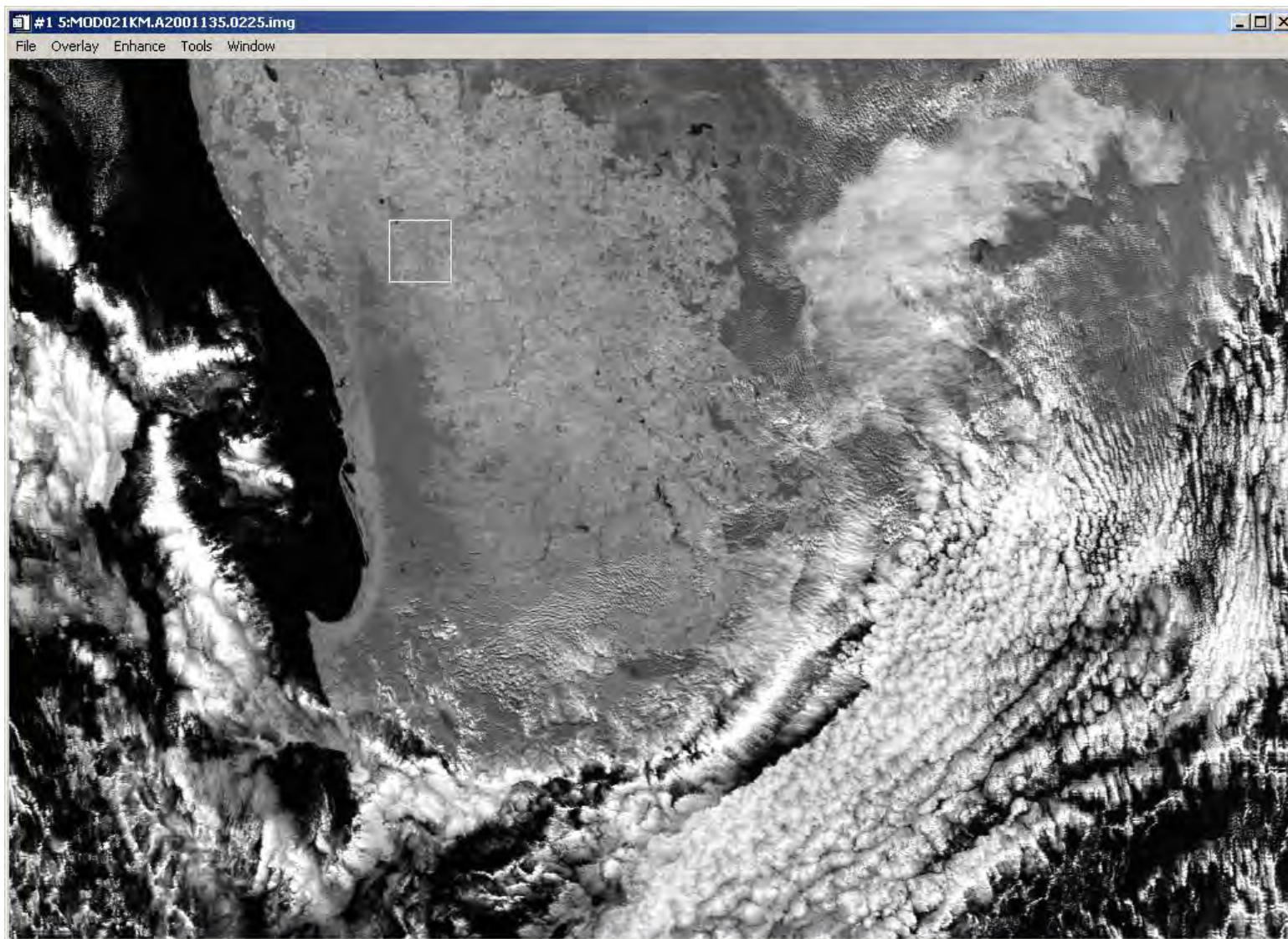
Band 3 (0.45 μm)



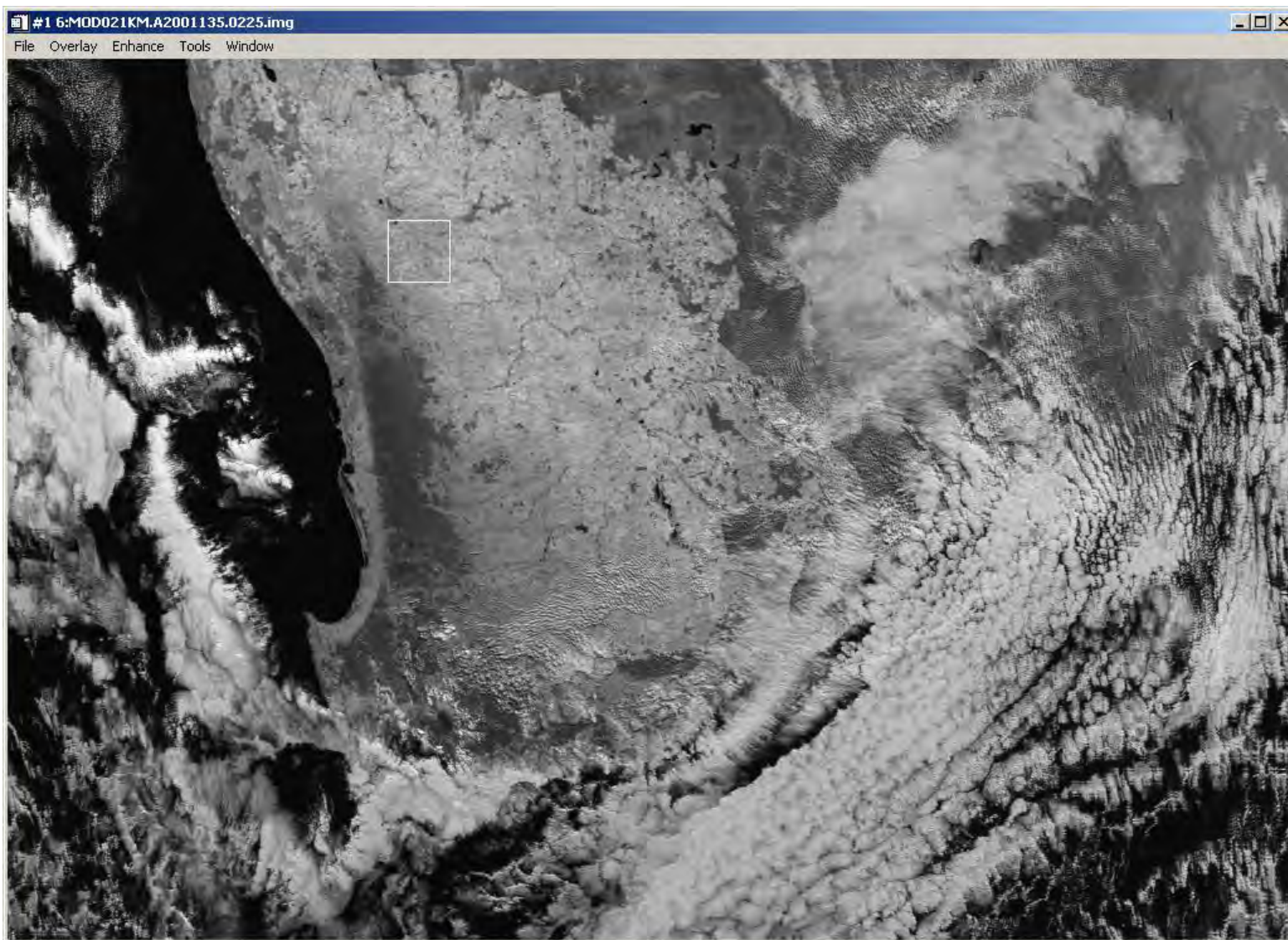
Band 4 (0.55 μm)



Band 5 (1.25 μm)



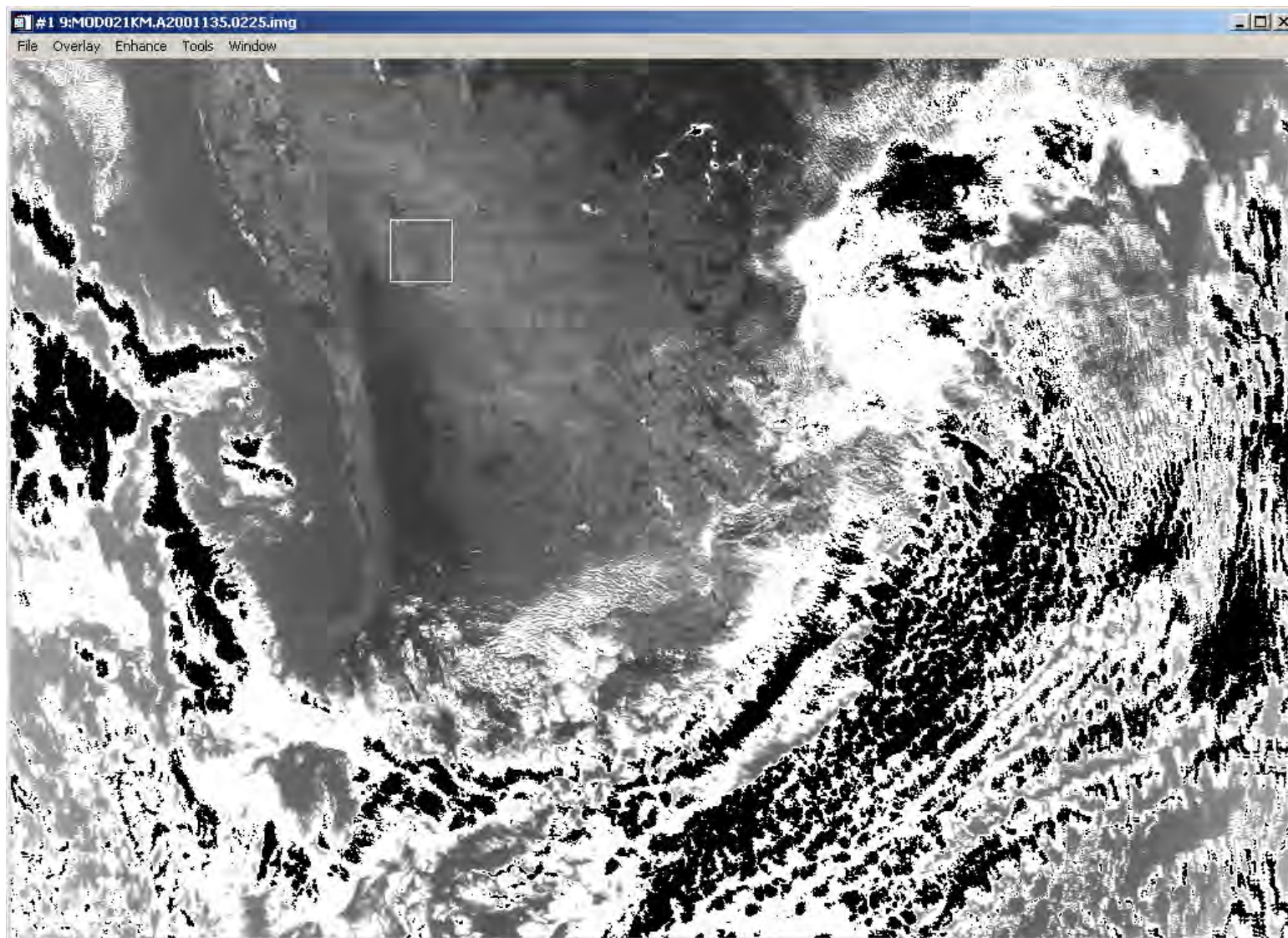
Band 6 (1.63 μm)



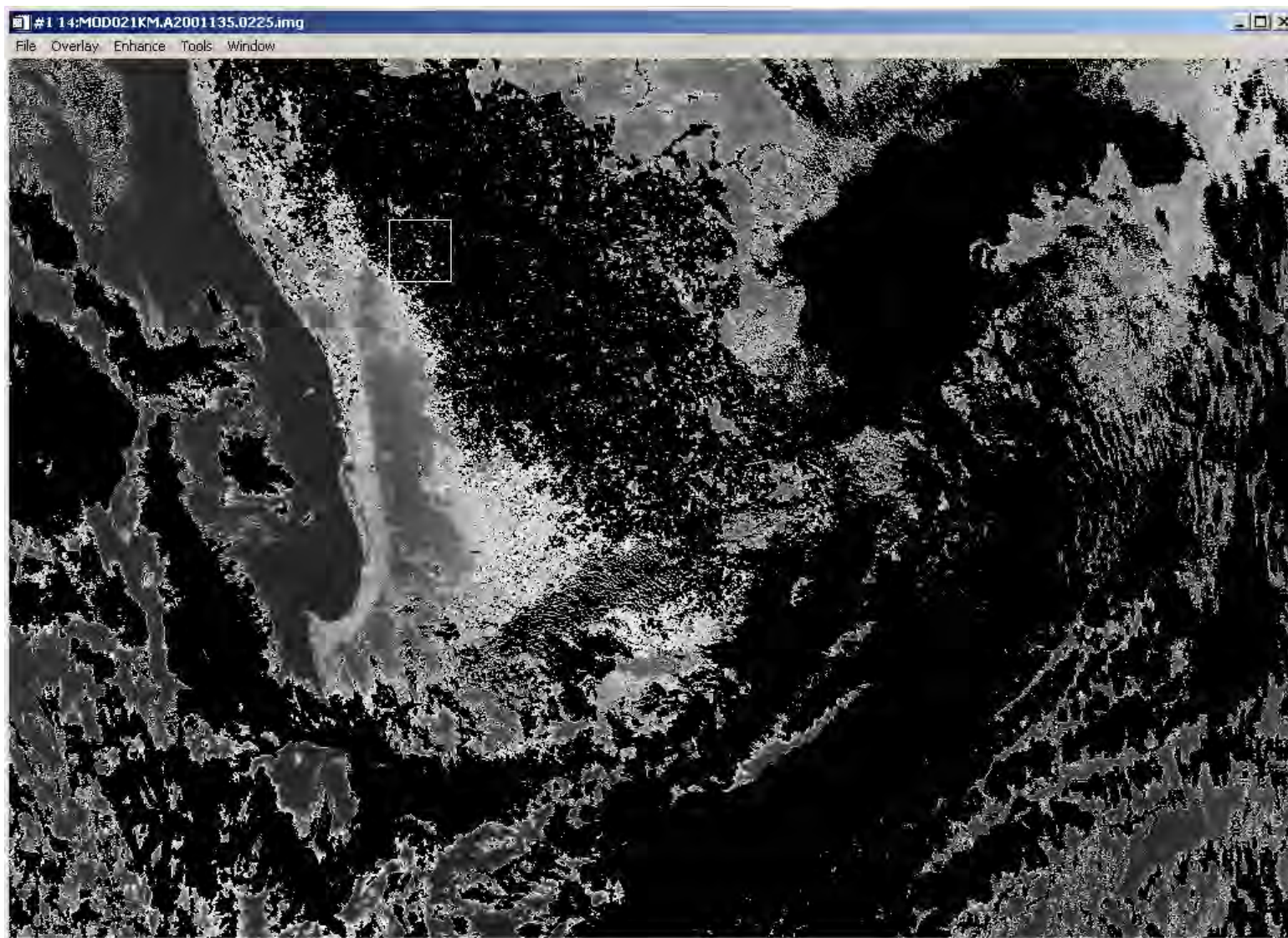
Band 7 (2.13 μm)



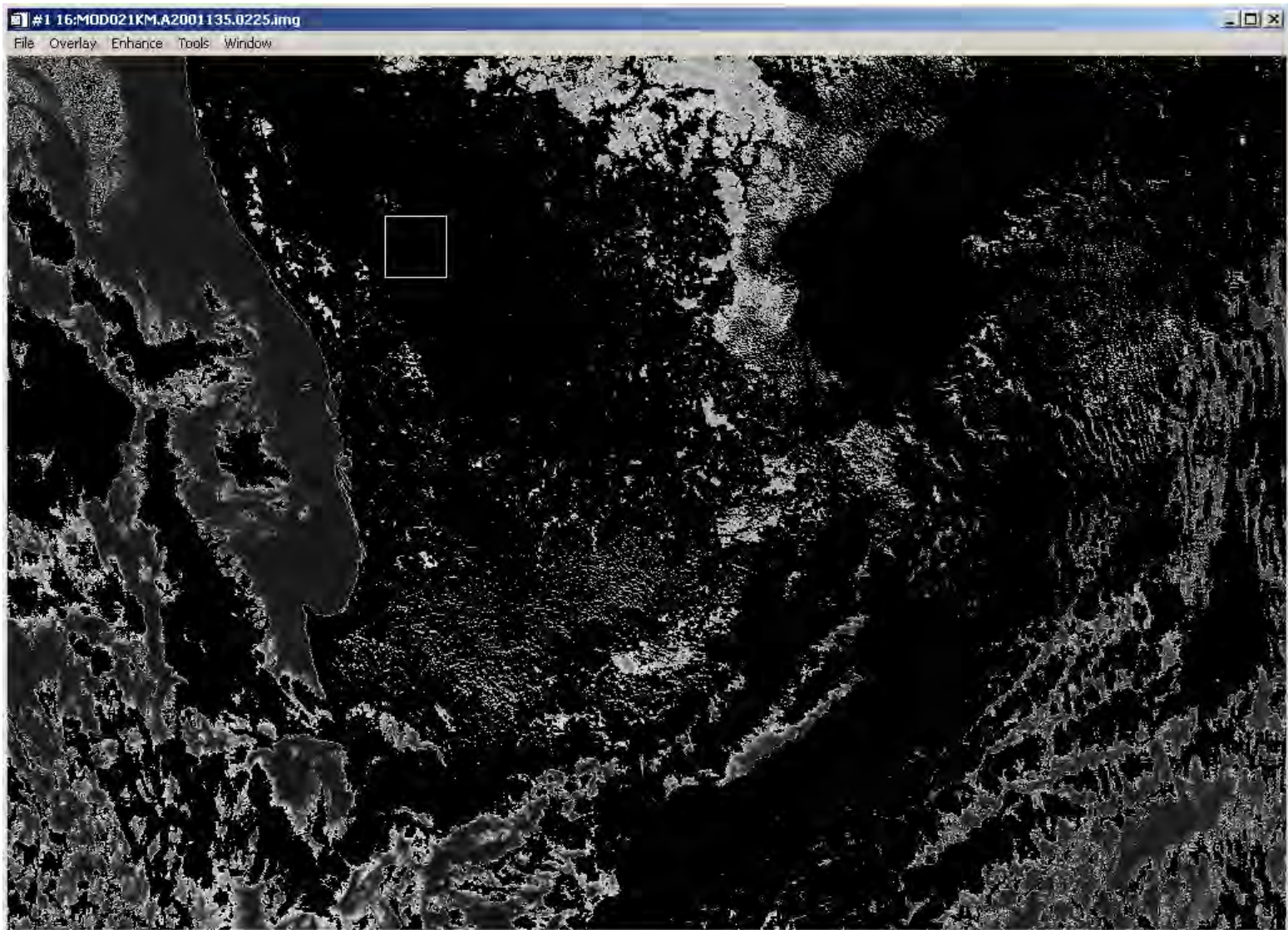
Band 9 (0.44 μm)



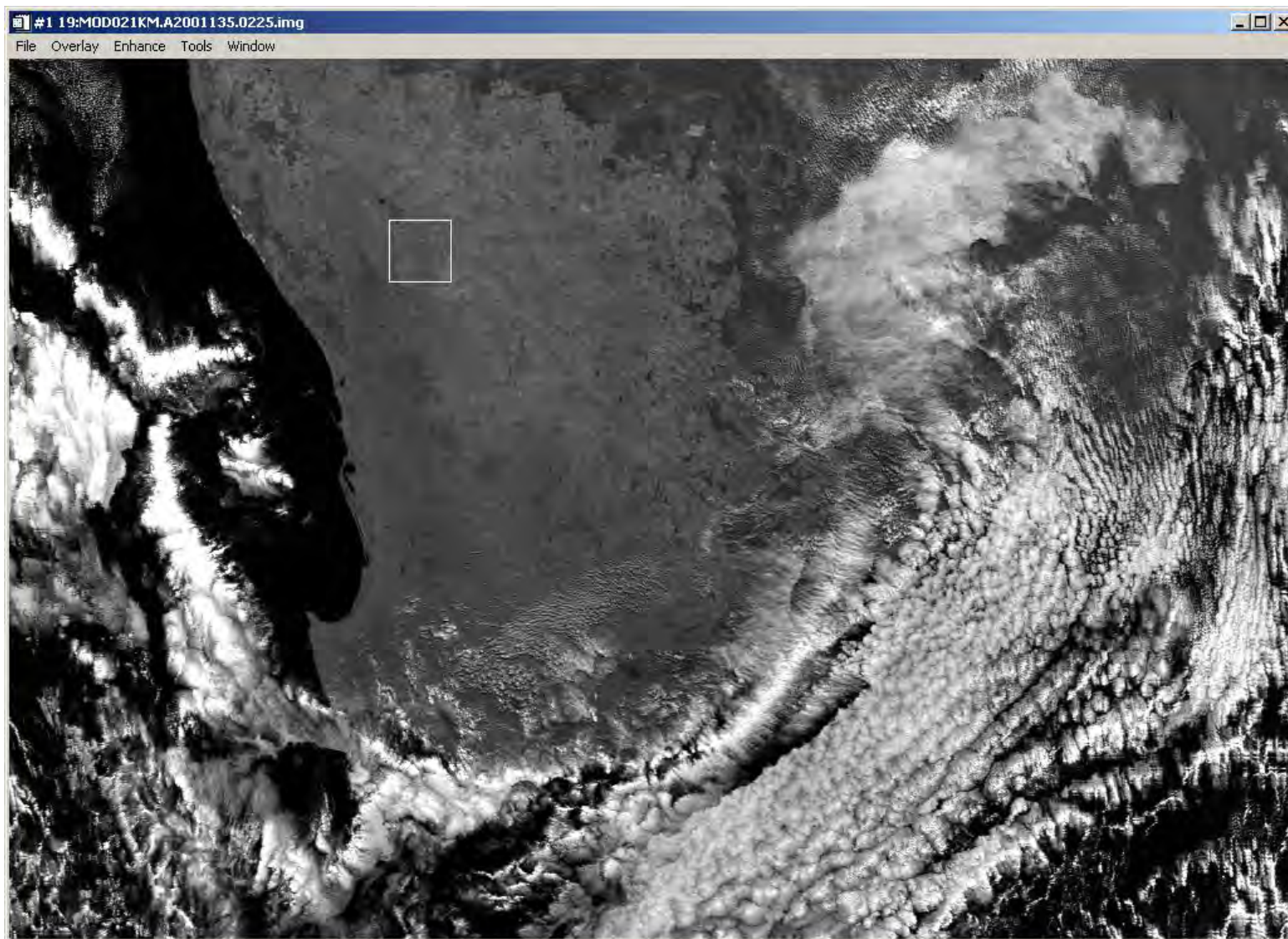
Band 14 (0.66 μm)



Band 16 (0.87 μm)



Band 19 (0.94 μm)



MODIS Emissive Band Specifications

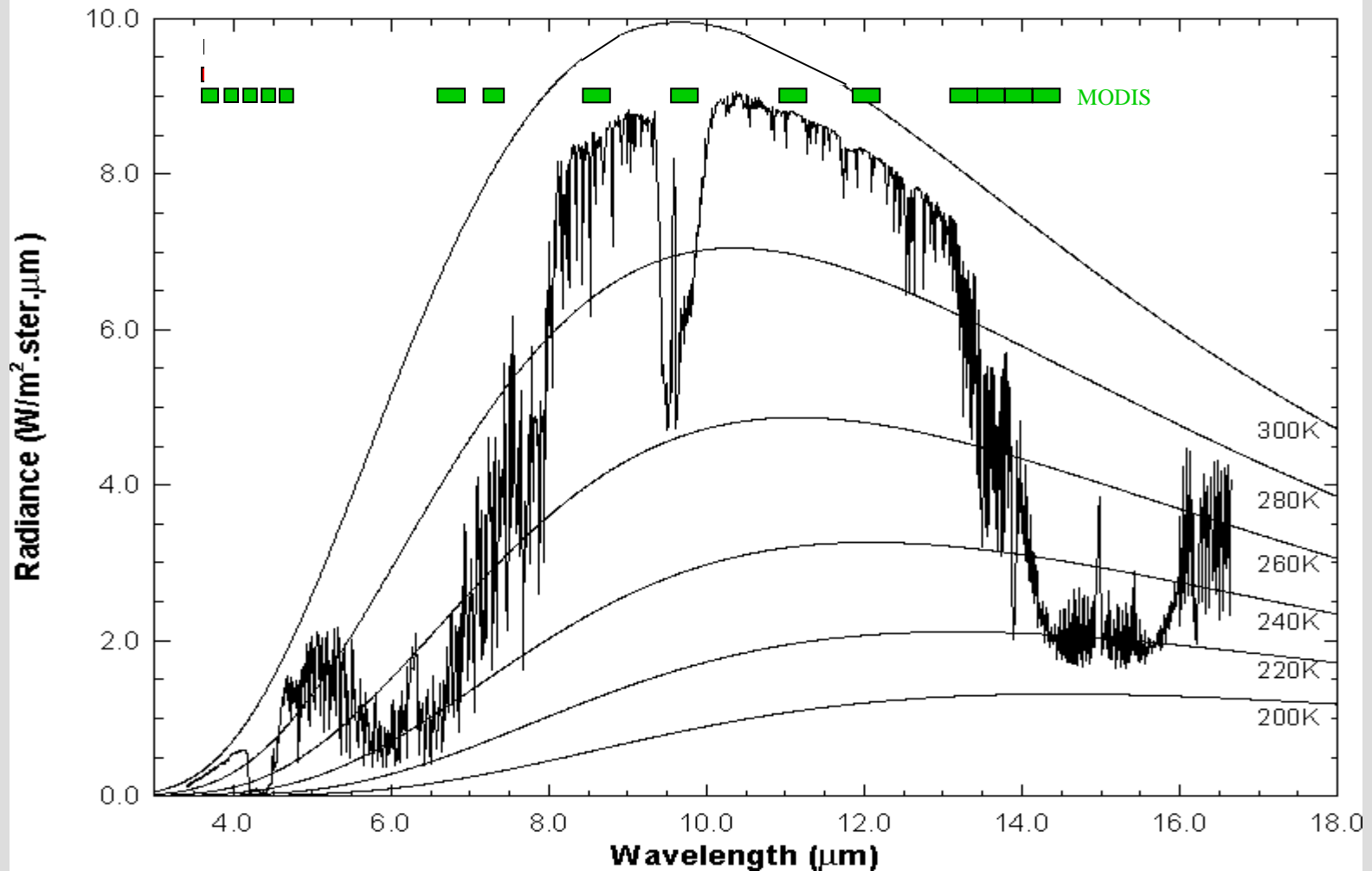
Primary Atmospheric Application	Band	Bandwidth ¹	T _{typical} (K)	Radiance ² at T _{typical}	NEΔT (K) Specification	NEΔT (K) Predicted
Surface Temperature	20	3.660-3.840	300	0.45	0.05	0.05
	22	3.929-3.989	300	0.67	0.07	0.05
	23	4.020-4.080	300	0.79	0.07	0.05
Temperature profile	24	4.433-4.498	250	0.17	0.25	0.15
	25	4.482-4.549	275	0.59	0.25	0.10
Moisture profile	27	6.535-6.895	240	1.16	0.25	0.05
	28	7.175-7.475	250	2.18	0.25	0.05
	29	8.400-8.700	300	9.58	0.05	0.05
Ozone	30	9.580-9.880	250	3.69	0.25	0.05
Surface Temperature	31	10.780-11.280	300	9.55	0.05	0.05
	32	11.770-12.270	300	8.94	0.05	0.05
Temperature profile	33	13.185-13.485	260	4.52	0.25	0.15
	34	13.485-13.785	250	3.76	0.25	0.20
	35	13.785-14.085	240	3.11	0.25	0.25
	36	14.085-14.385	220	2.08	0.35	0.35

¹ μm at 50% response

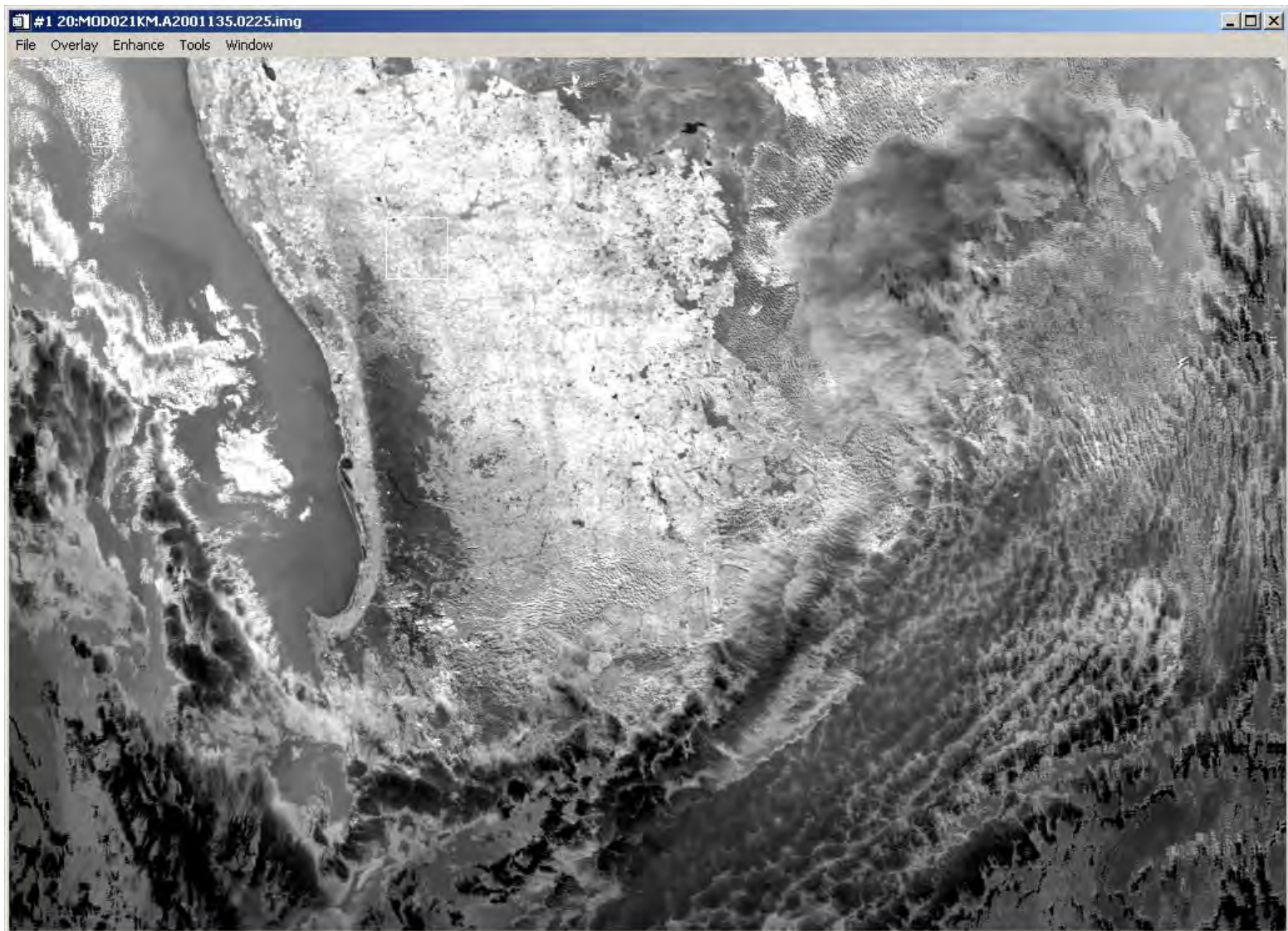
² W m⁻² sr⁻¹ μm⁻¹

MODIS IR Spectral Bands

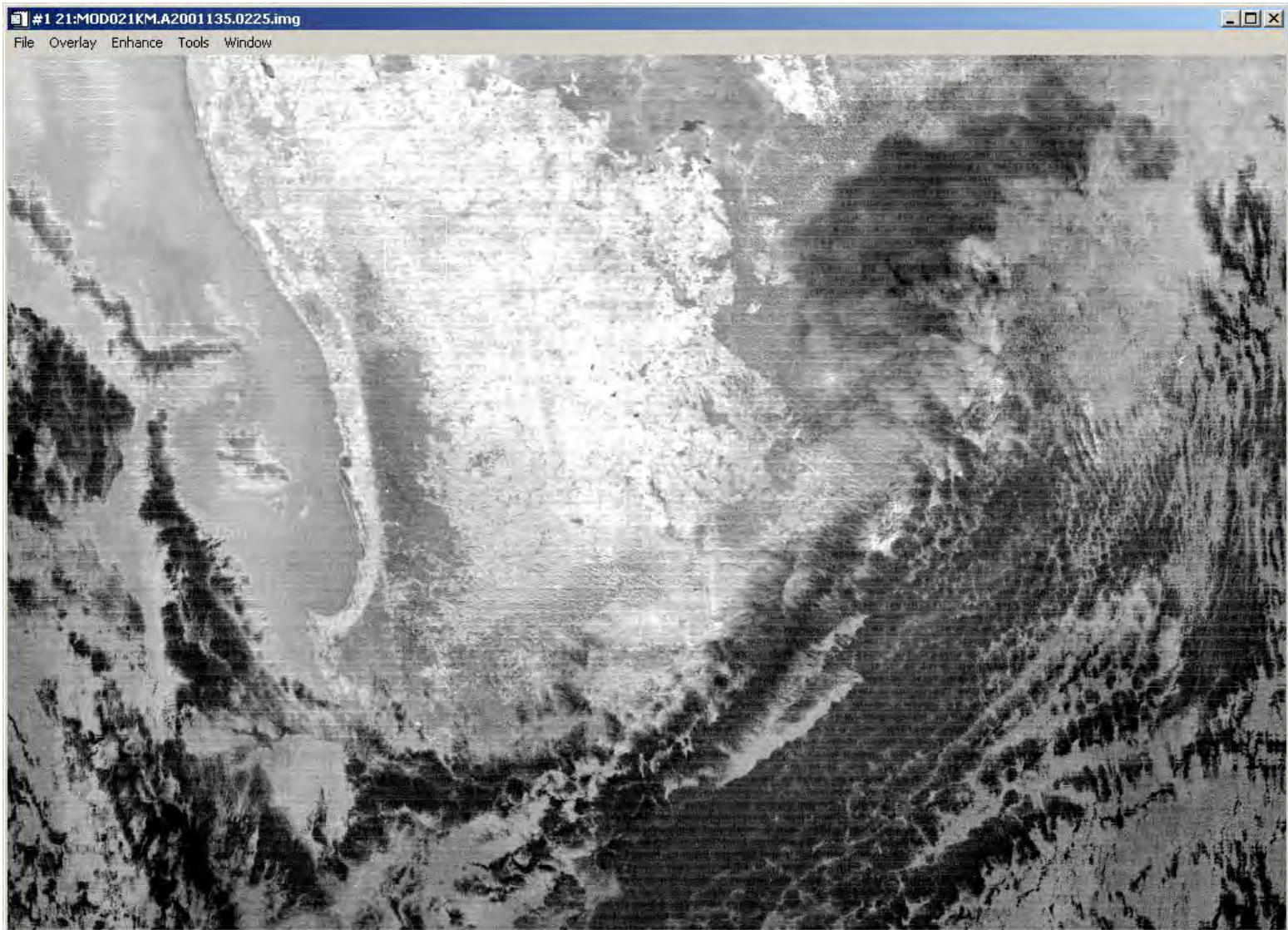
High resolution atmospheric absorption spectrum and comparative blackbody curves.



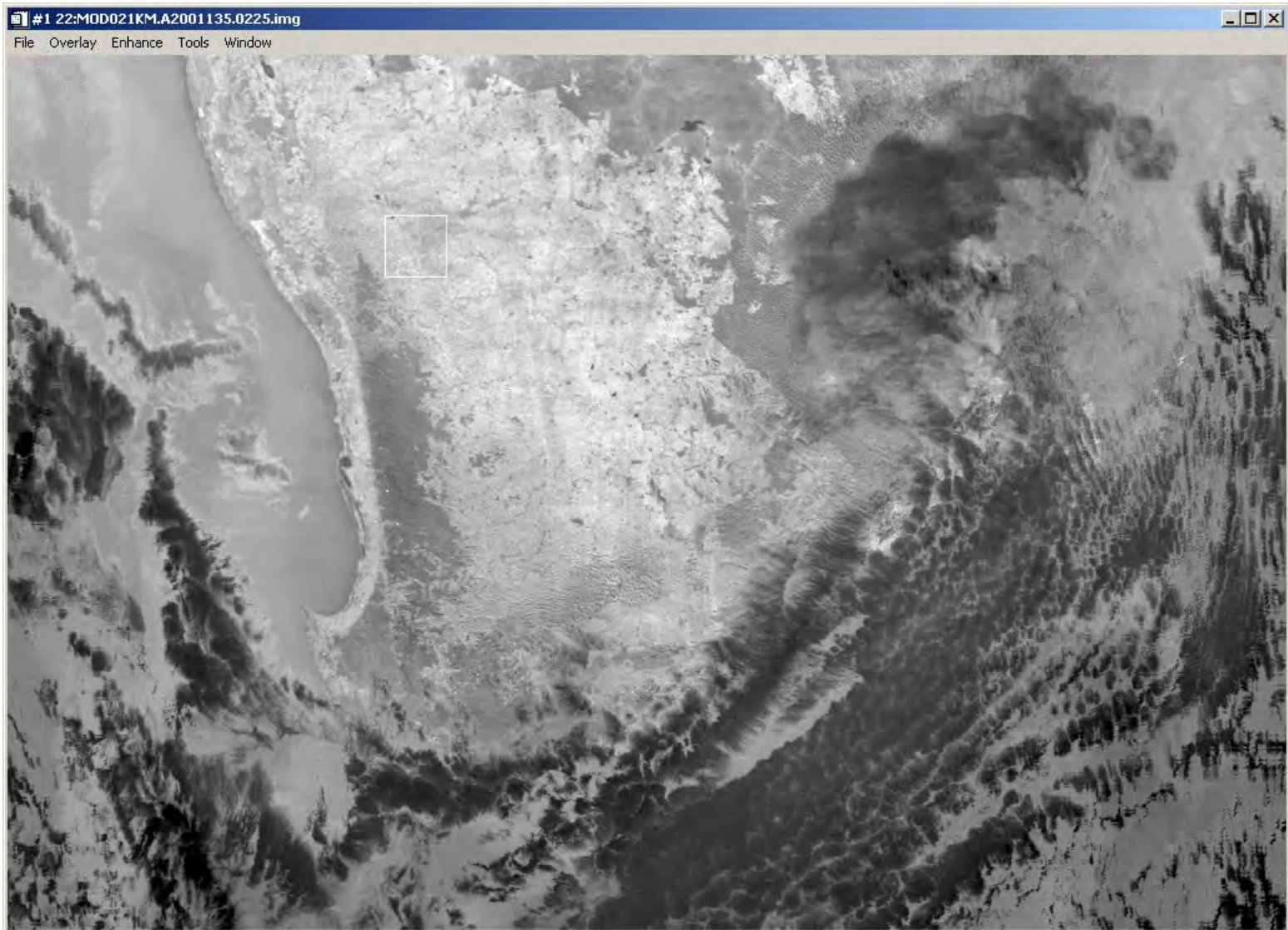
Band 20 (3.75 μm)



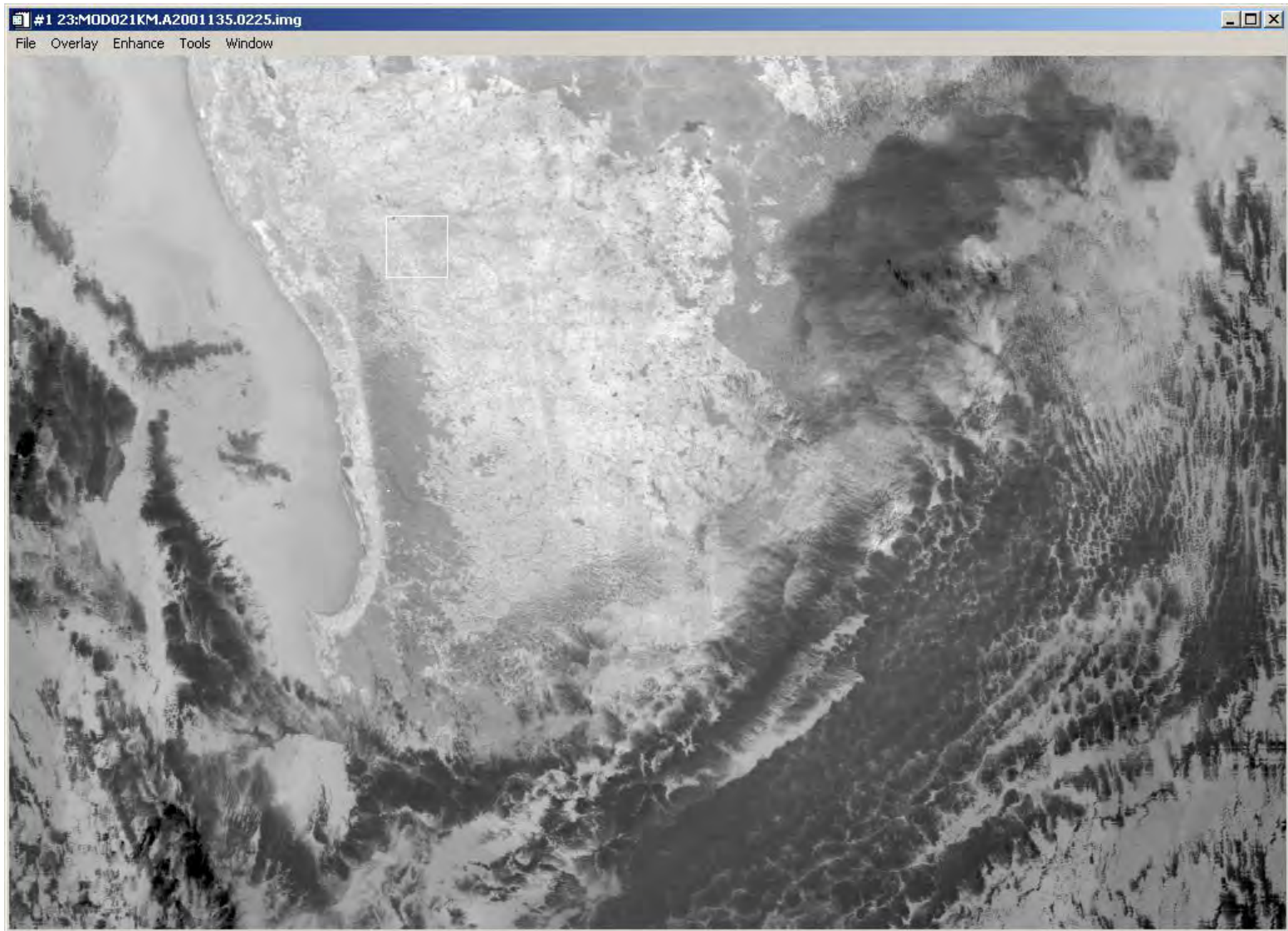
Band 21 (3.96 μm)



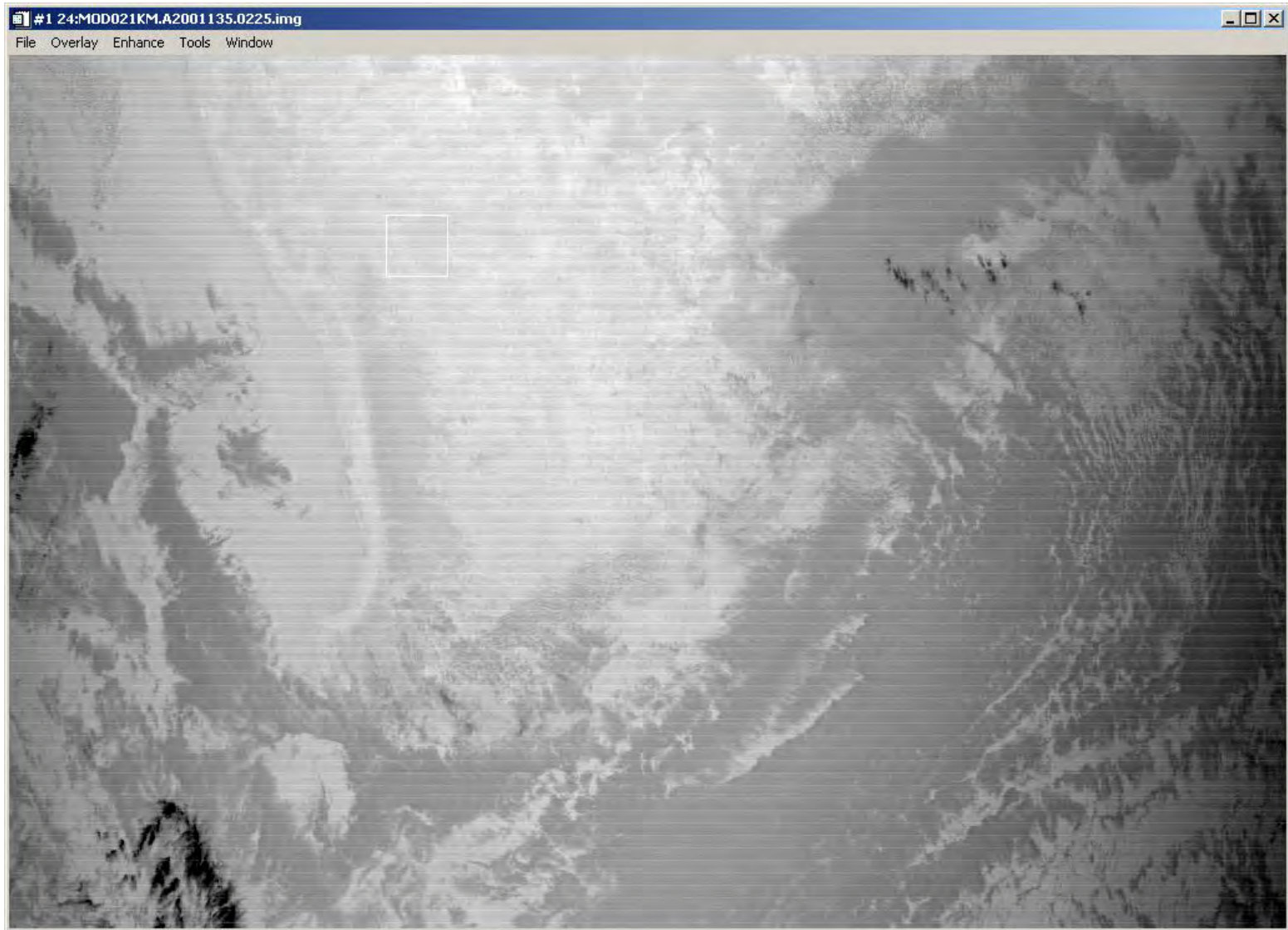
Band 22 (3.96 μm)



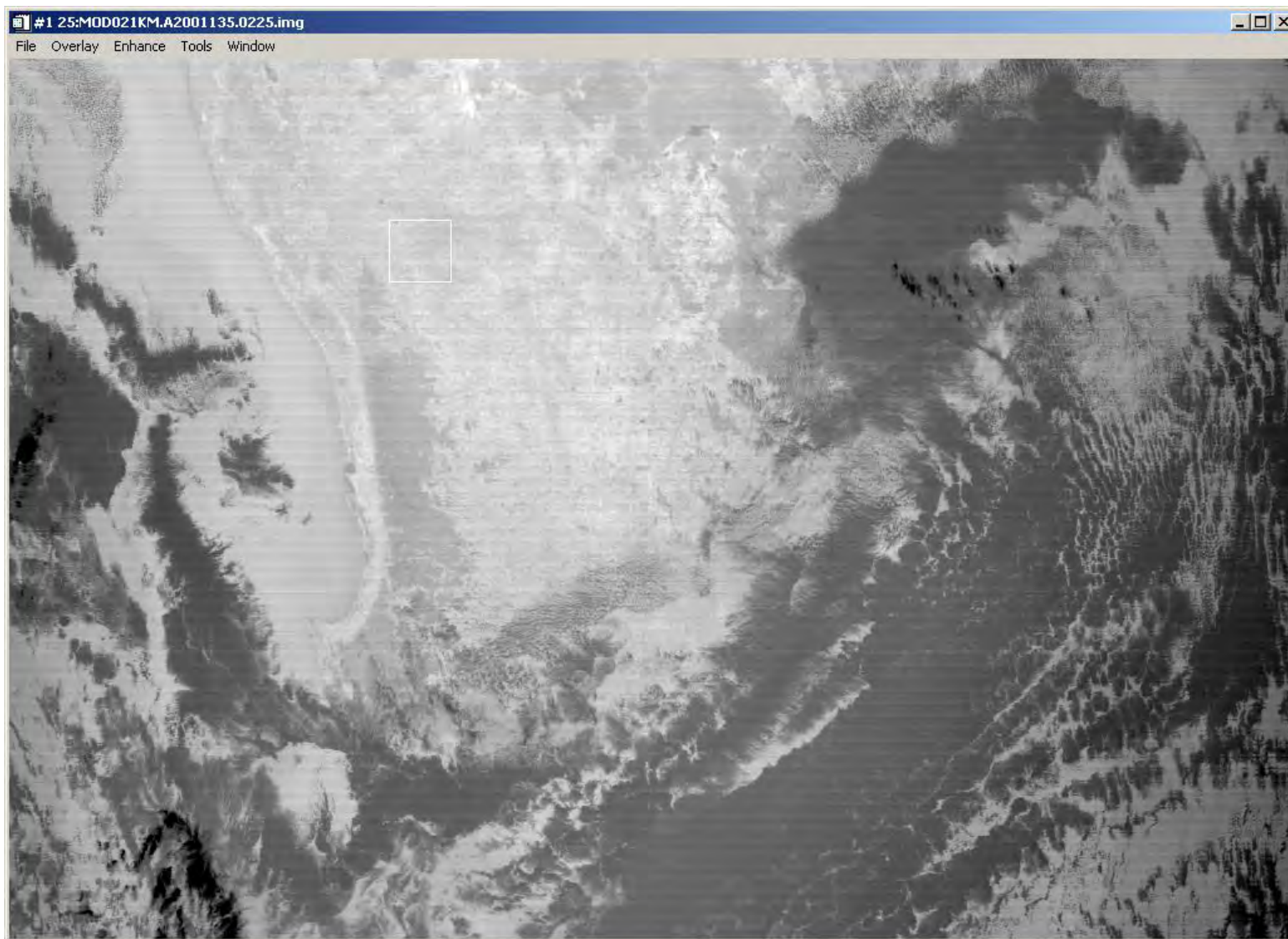
Band 23 (4.05 μm)



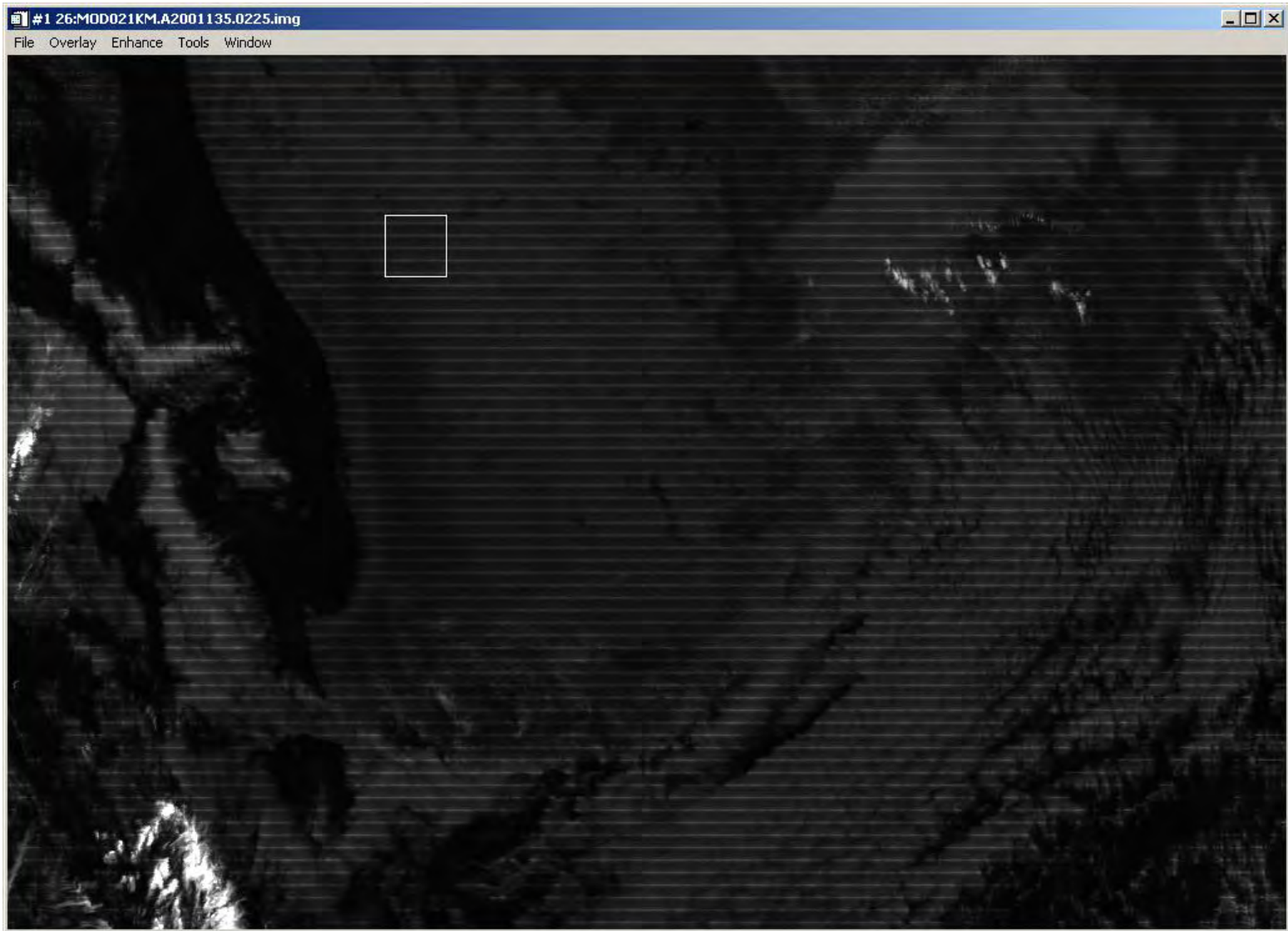
Band 24 (4.47 μm)



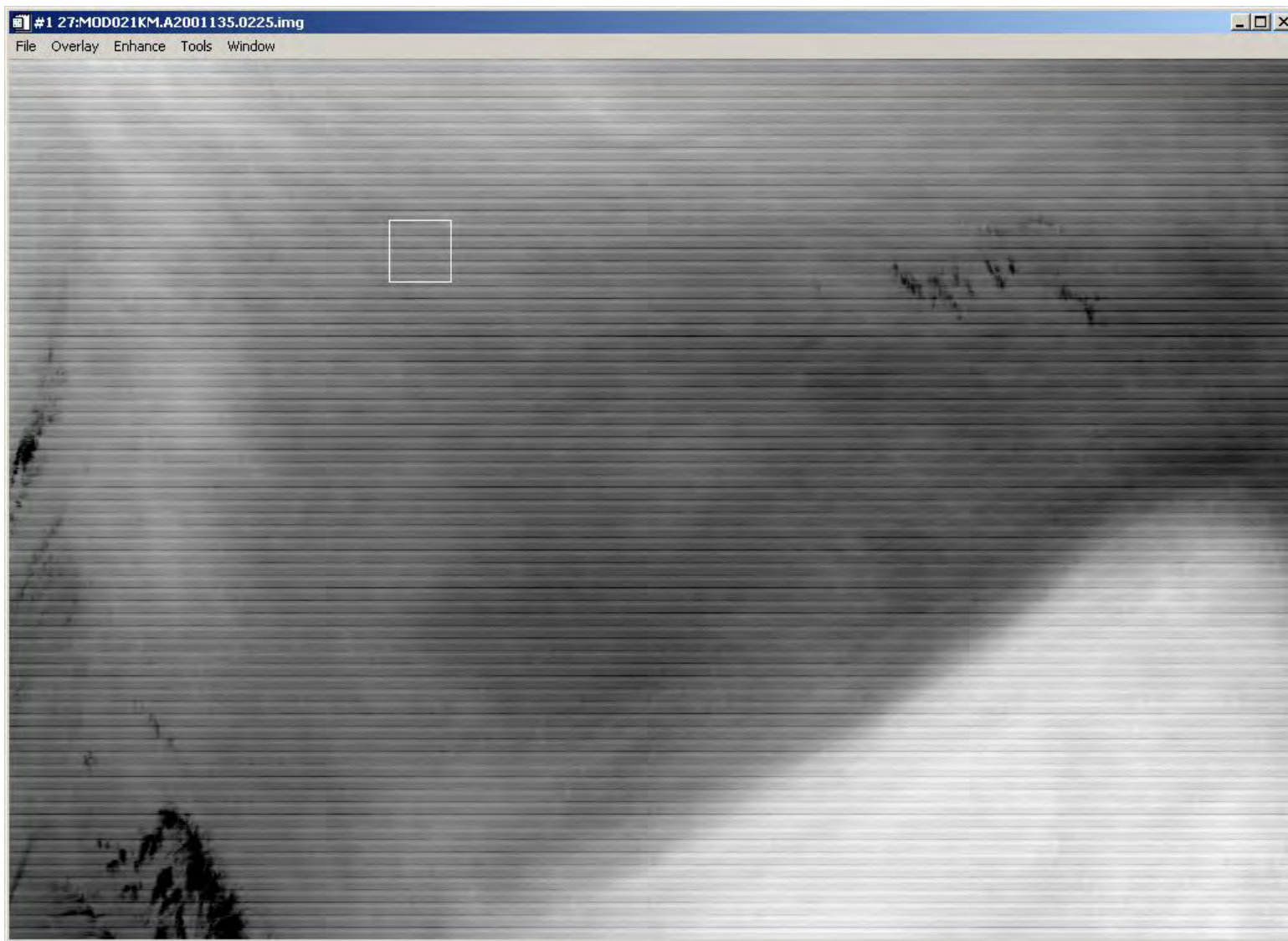
Band 25 (4.52 μm)



Band 26 (1.38 μm)



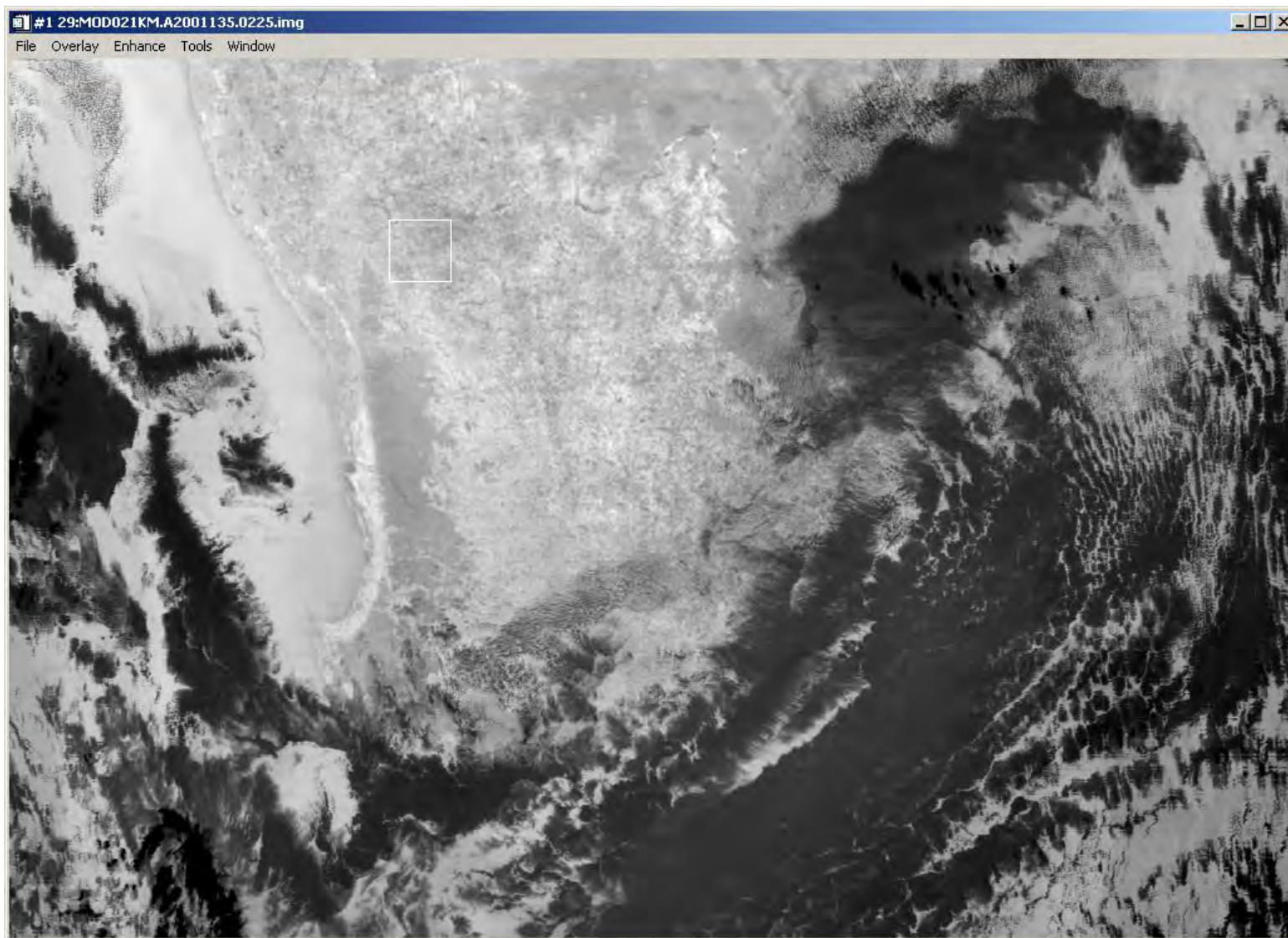
Band 27 (6.7 μm)



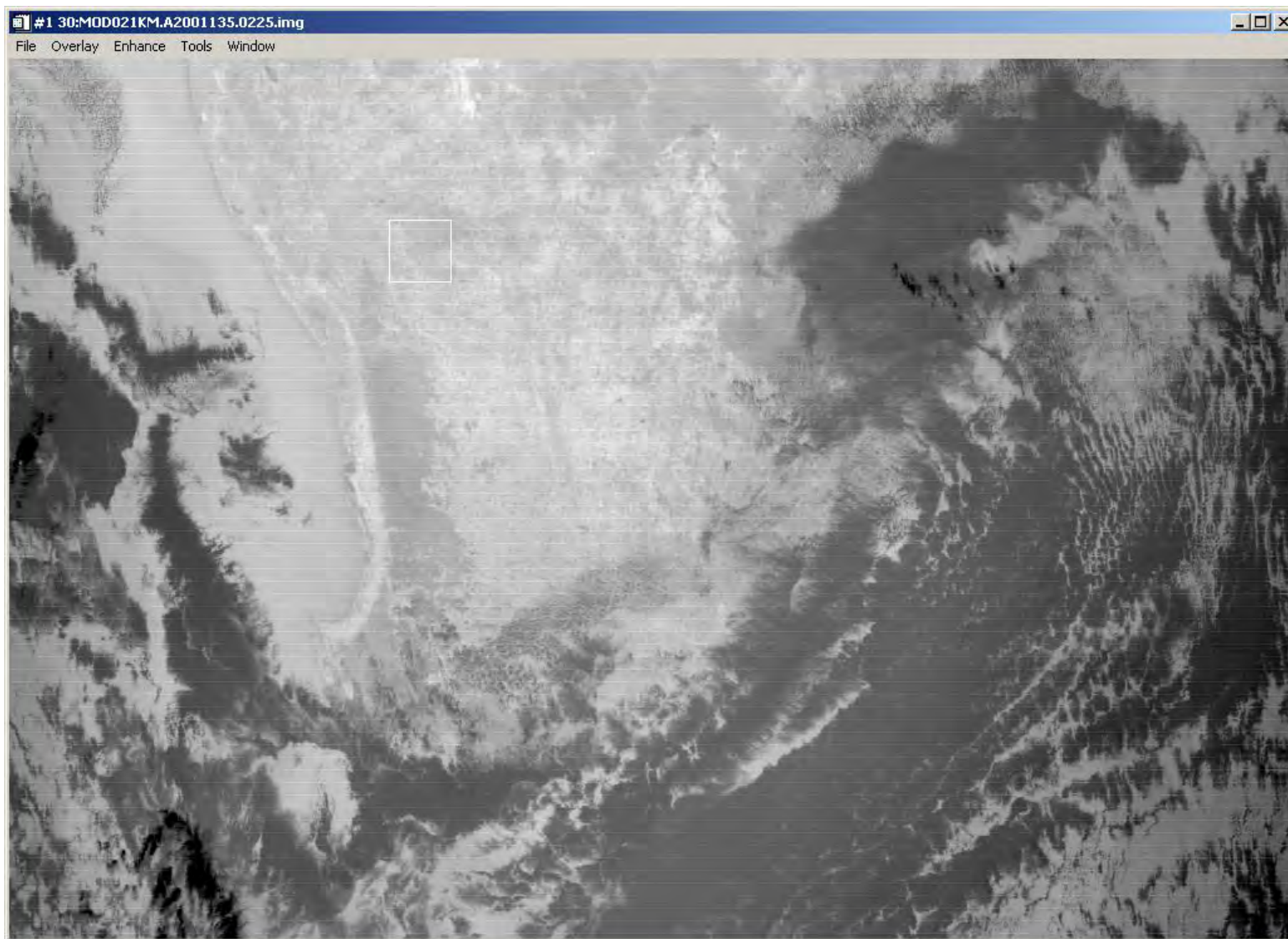
Band 28 (7.3 μm)



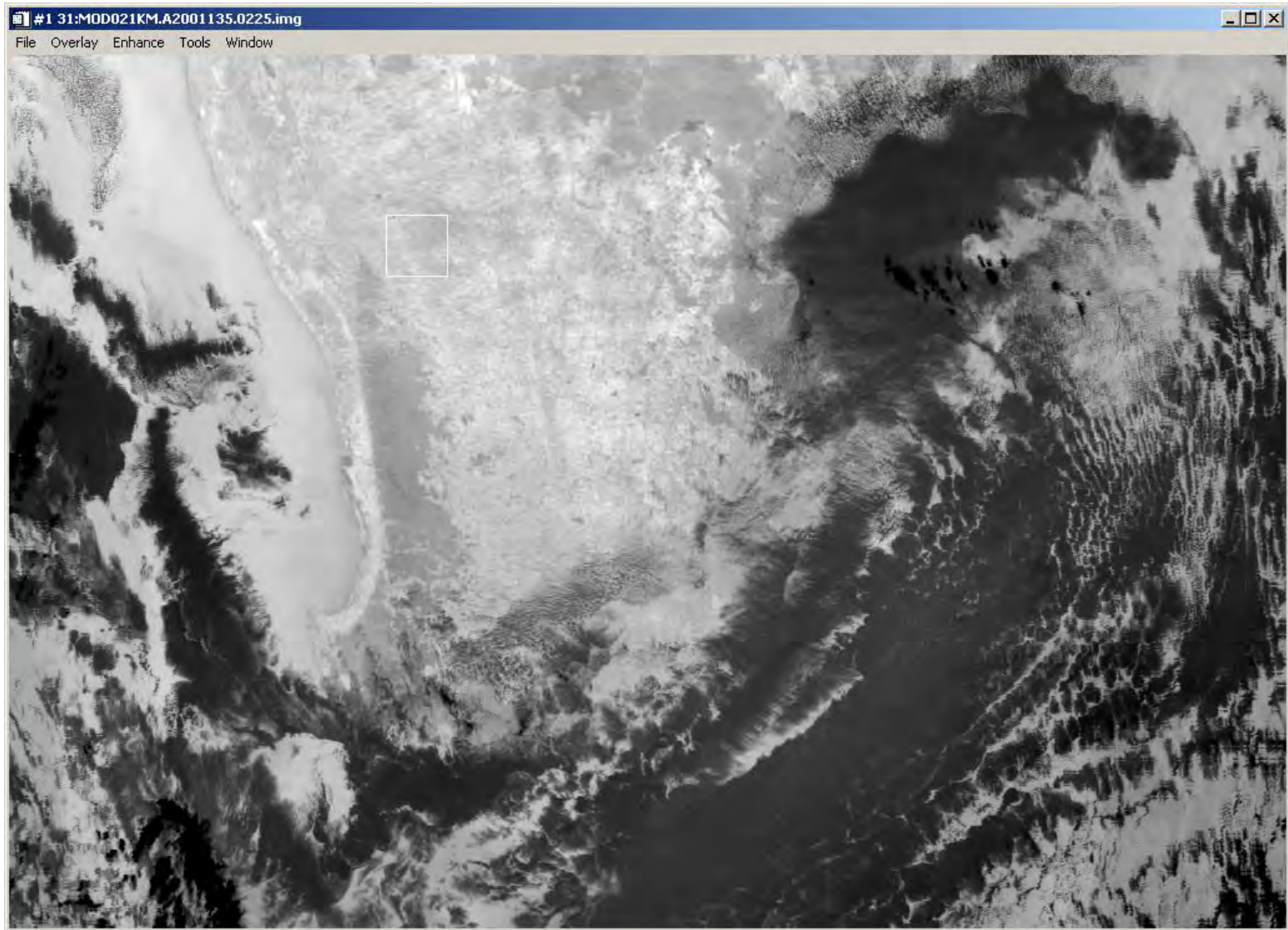
Band 29 (8.5 μm)



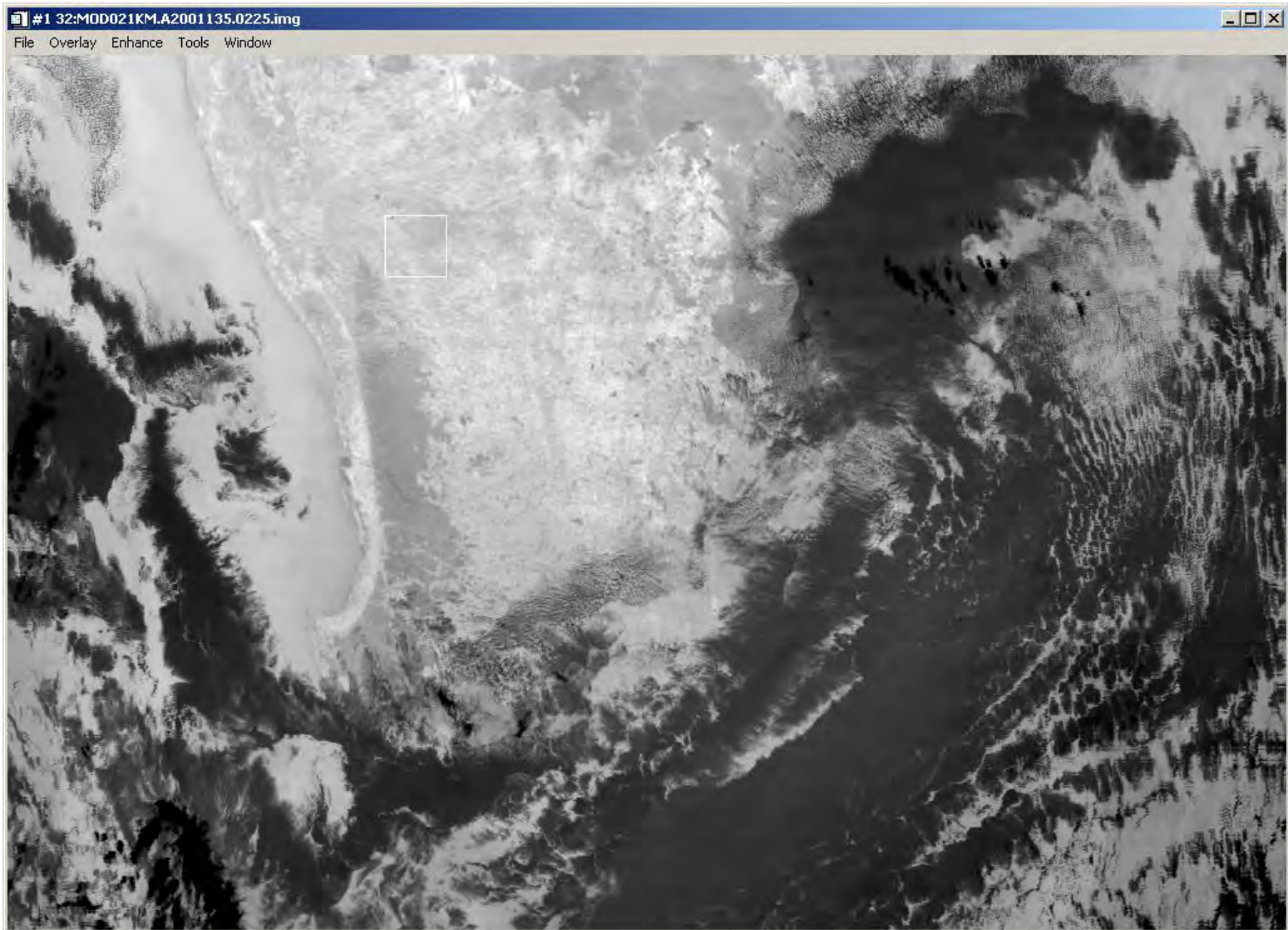
Band 30 (9.7 μm)



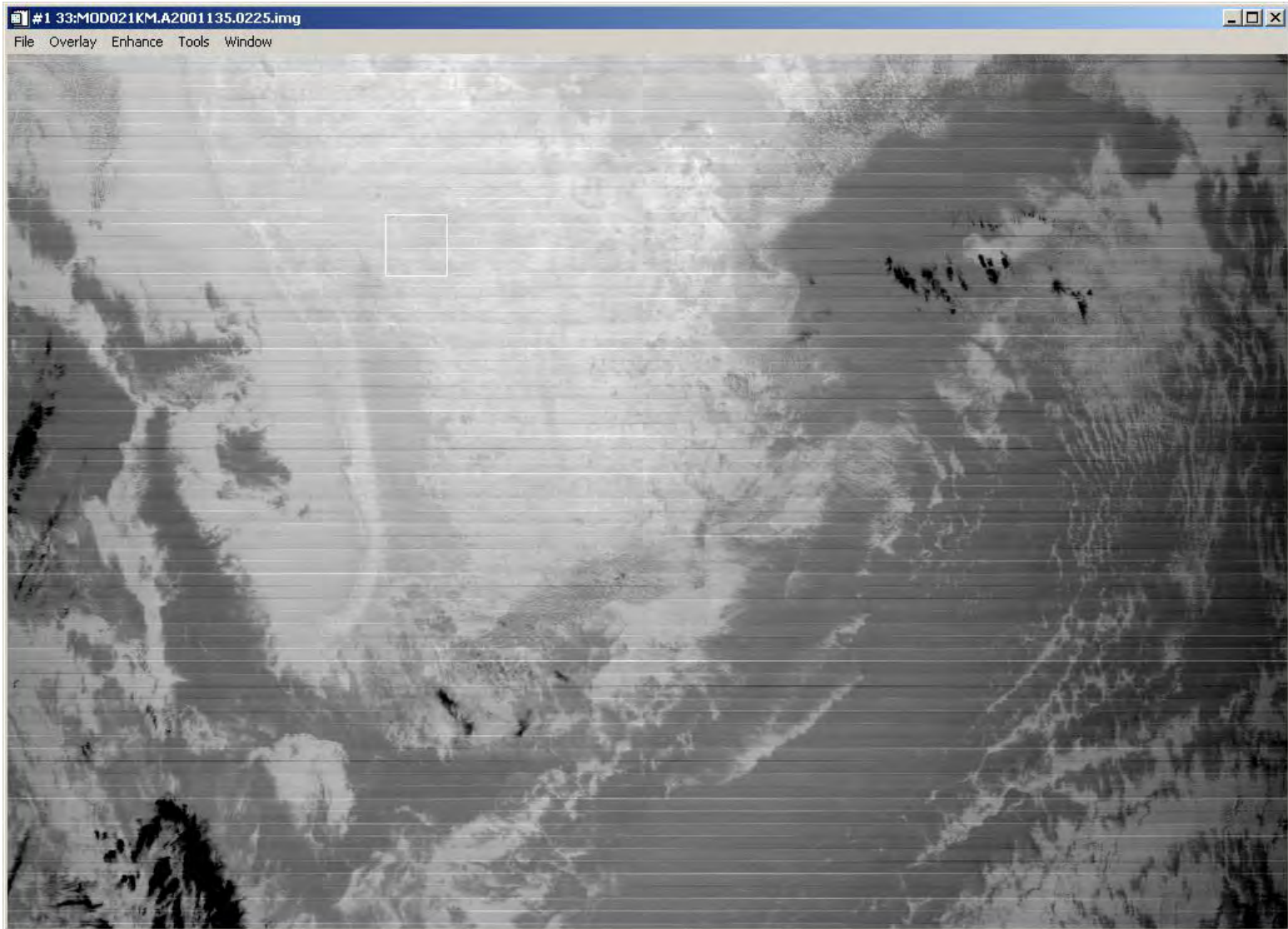
Band 31 (11.0 μm)



Band 32 (12.0 μm)



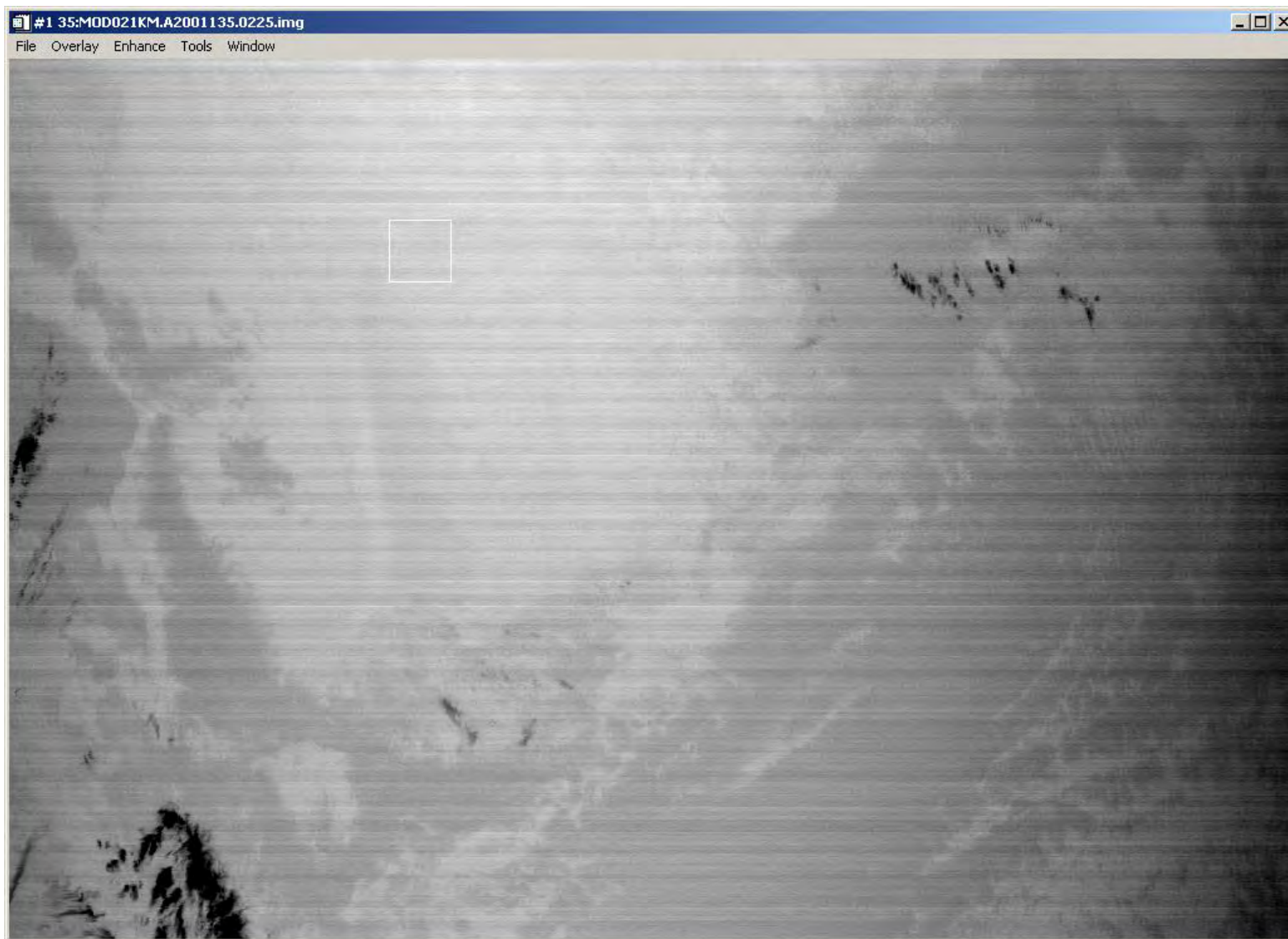
Band 33 (13.3 μm)



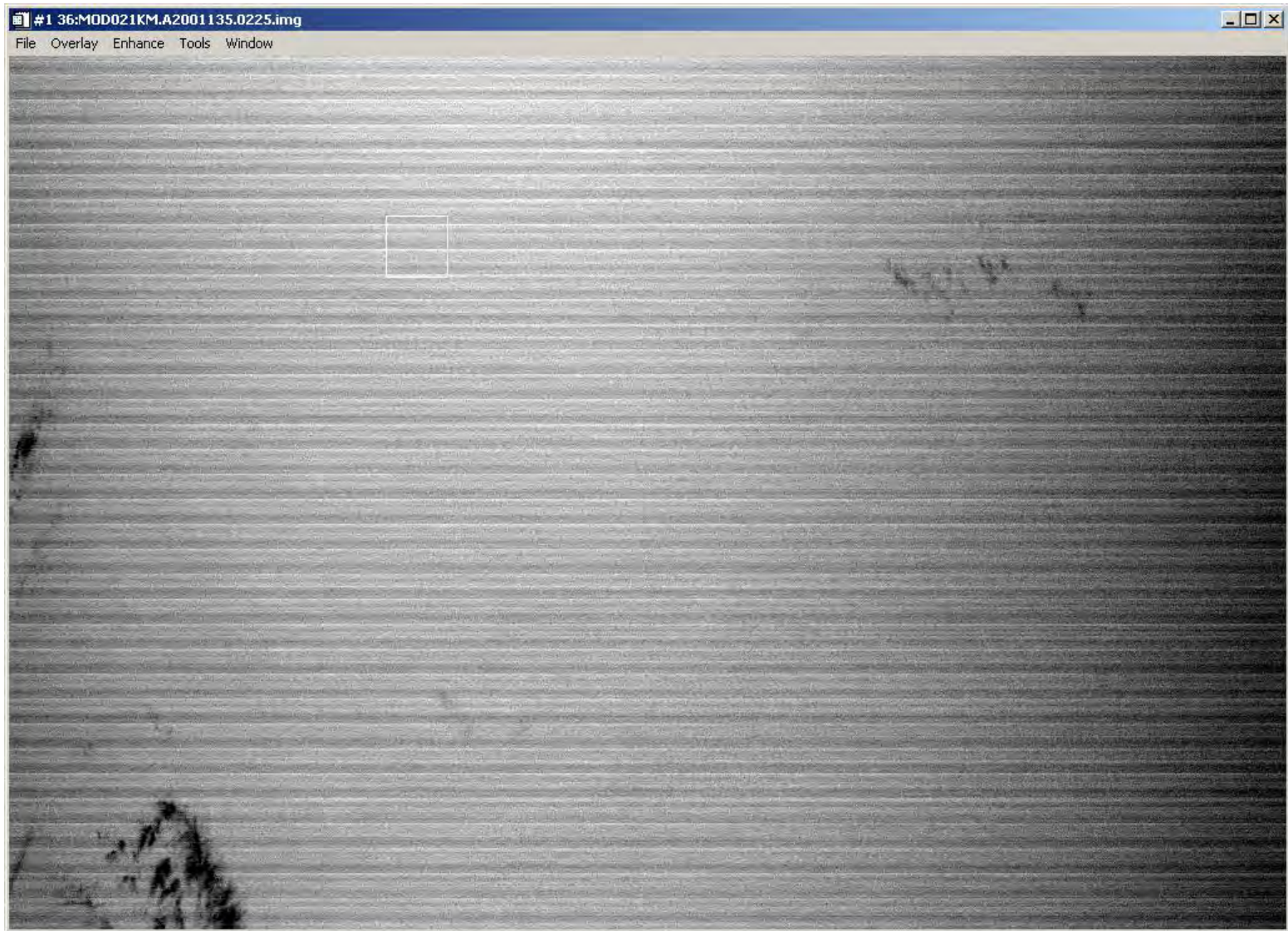
Band 34 (13.6 μm)



Band 35 (13.9 μm)



Band 36 (14.2 μm)



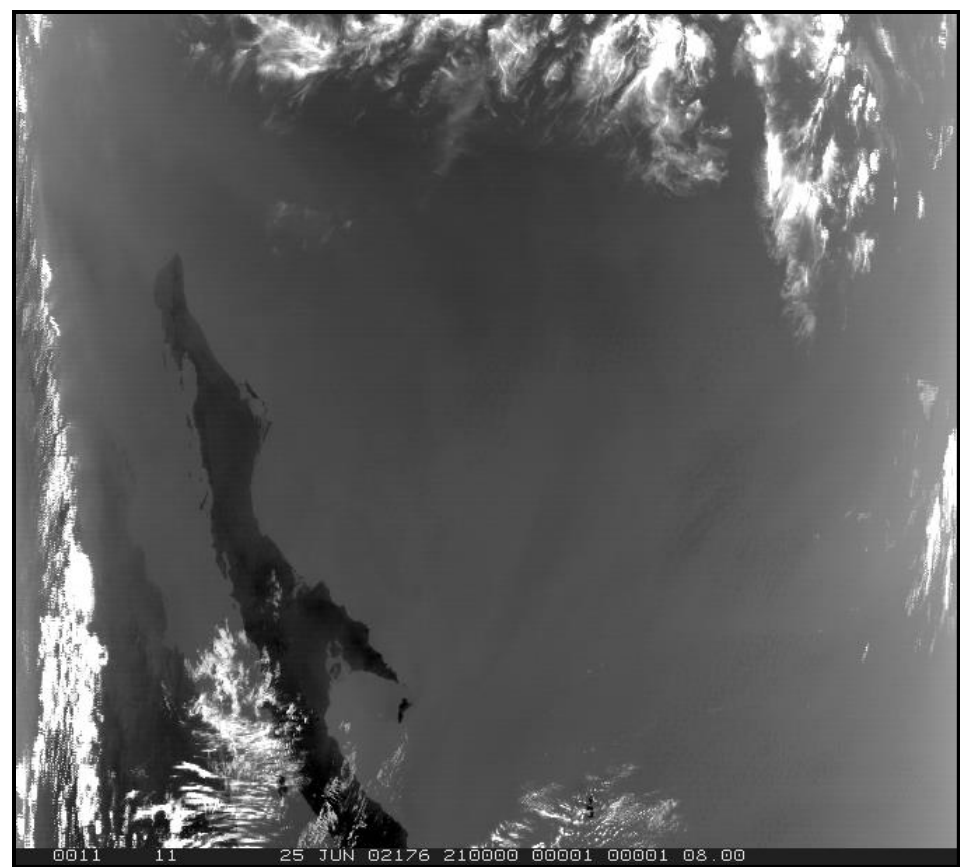
Aqua vs. Terra MODIS Images

Aqua June 25 2100 UTC

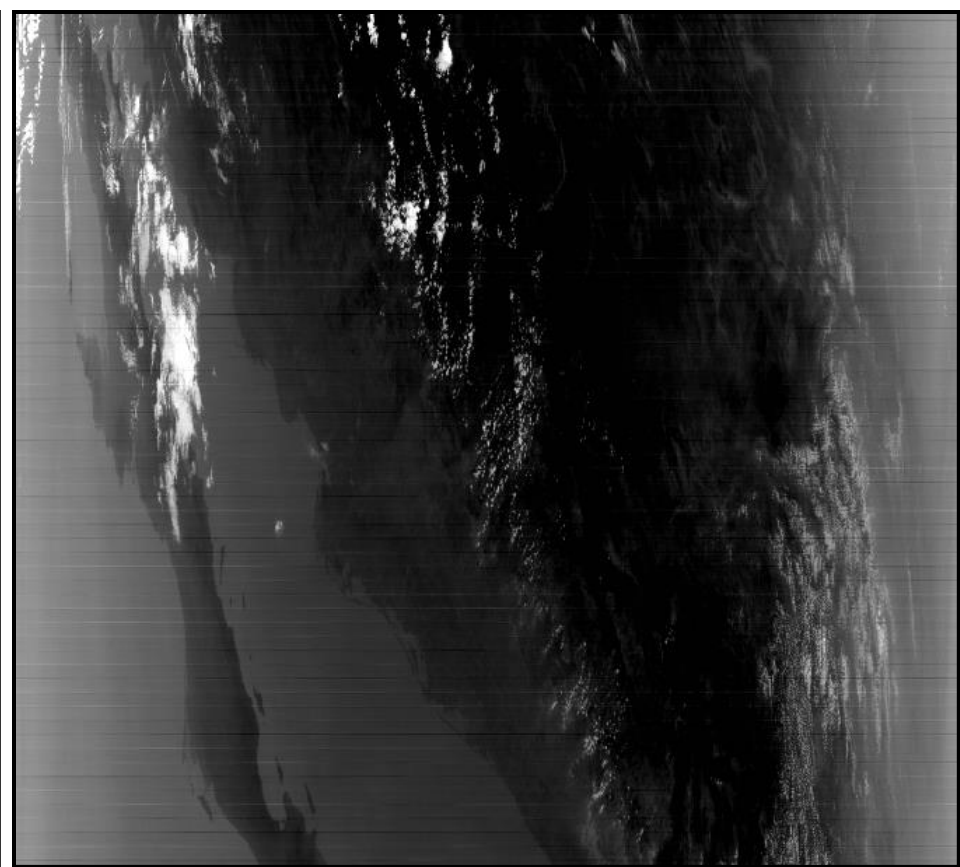


Terra June 25 1750 UTC

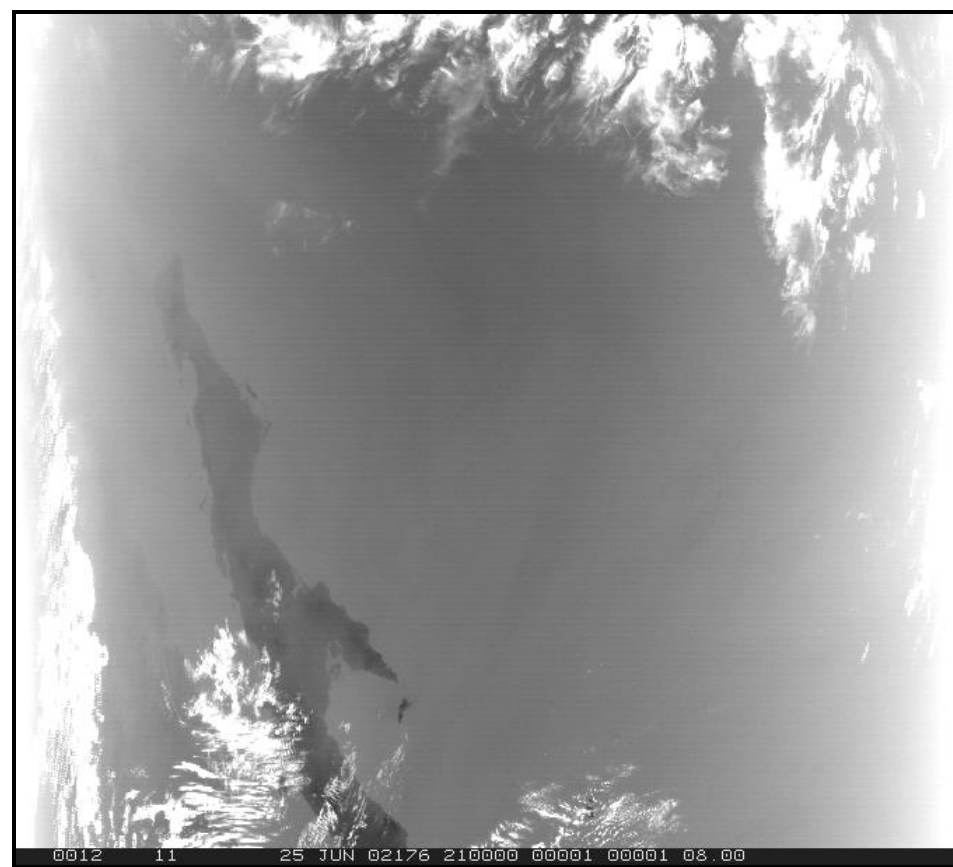




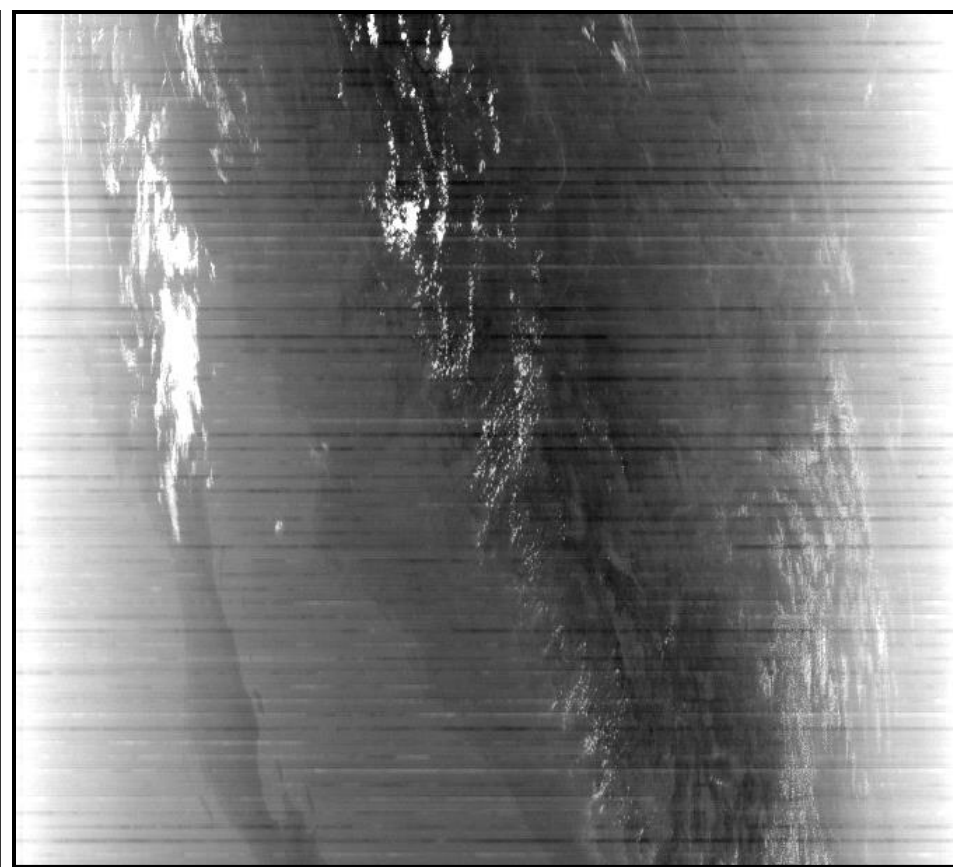
Aqua MODIS B33



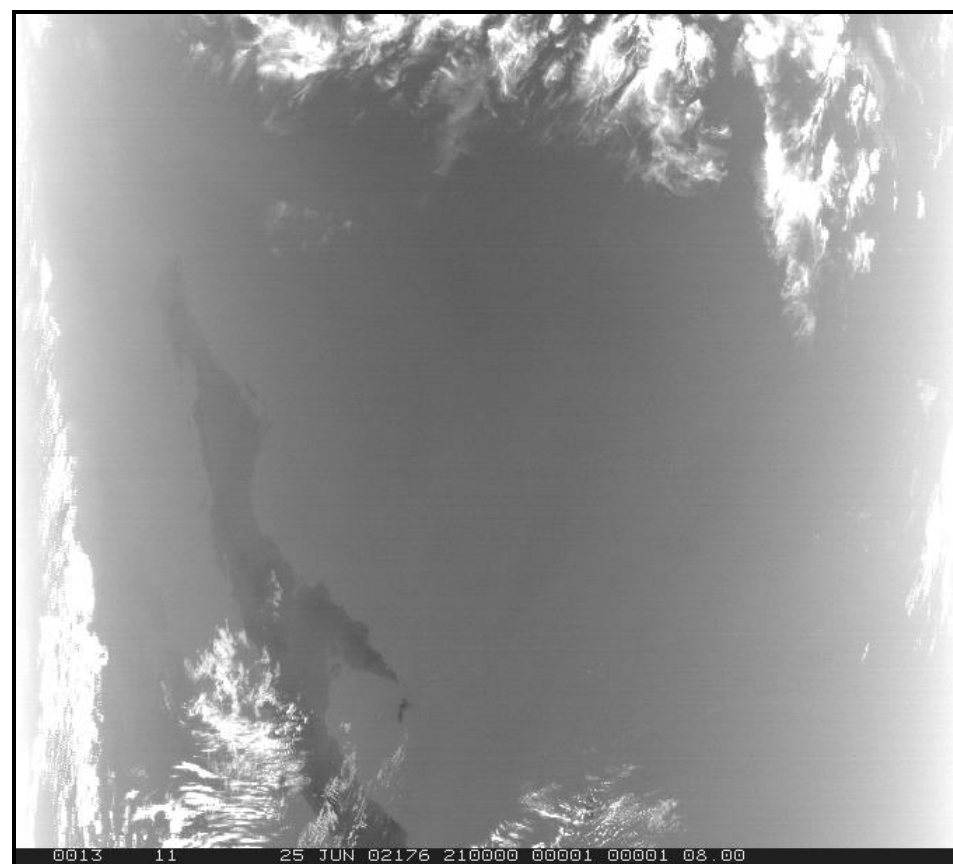
Terra MODIS B33



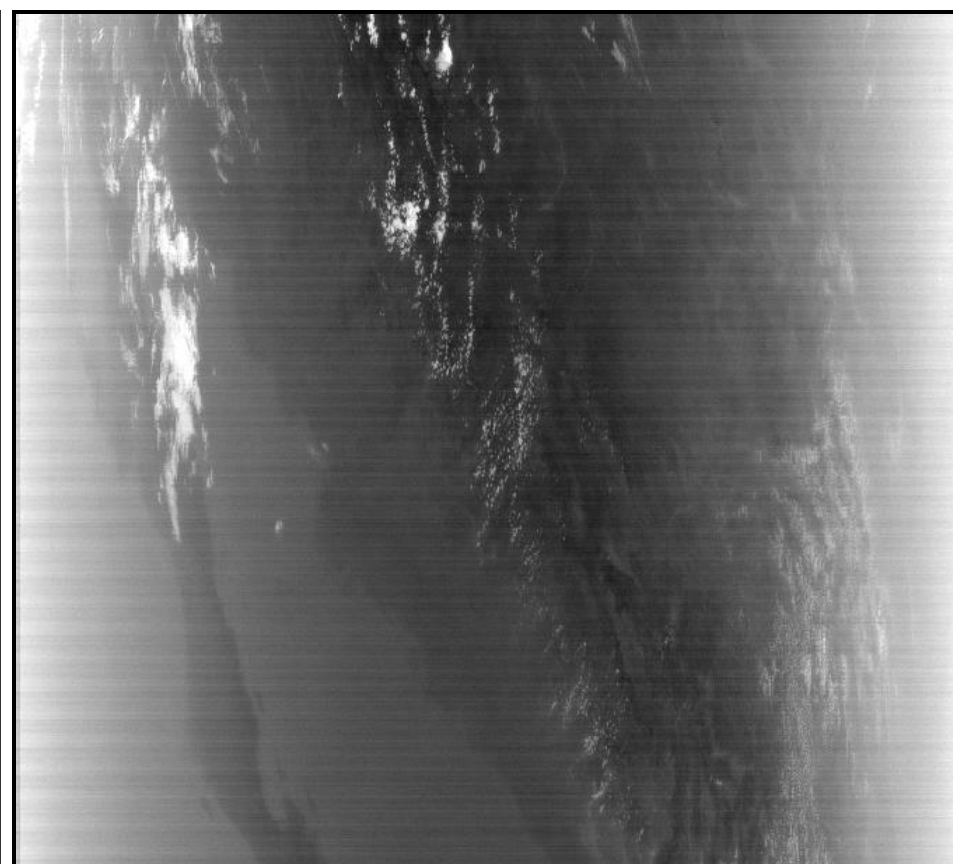
Aqua MODIS B34



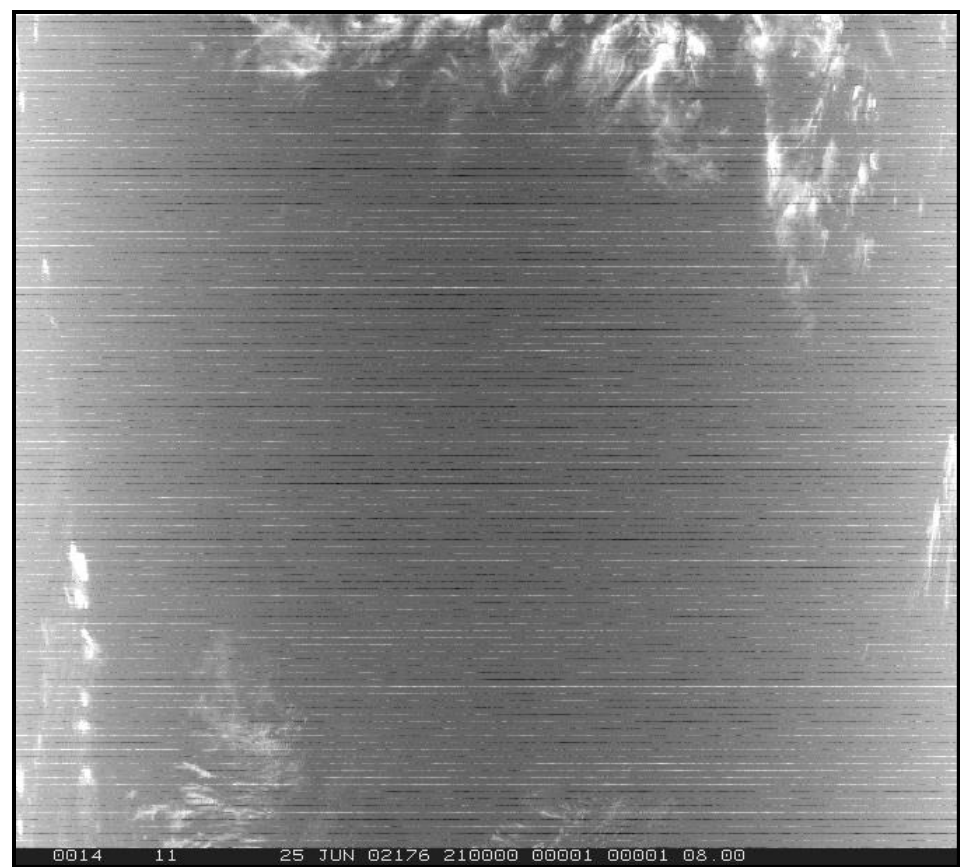
Terra MODIS B34



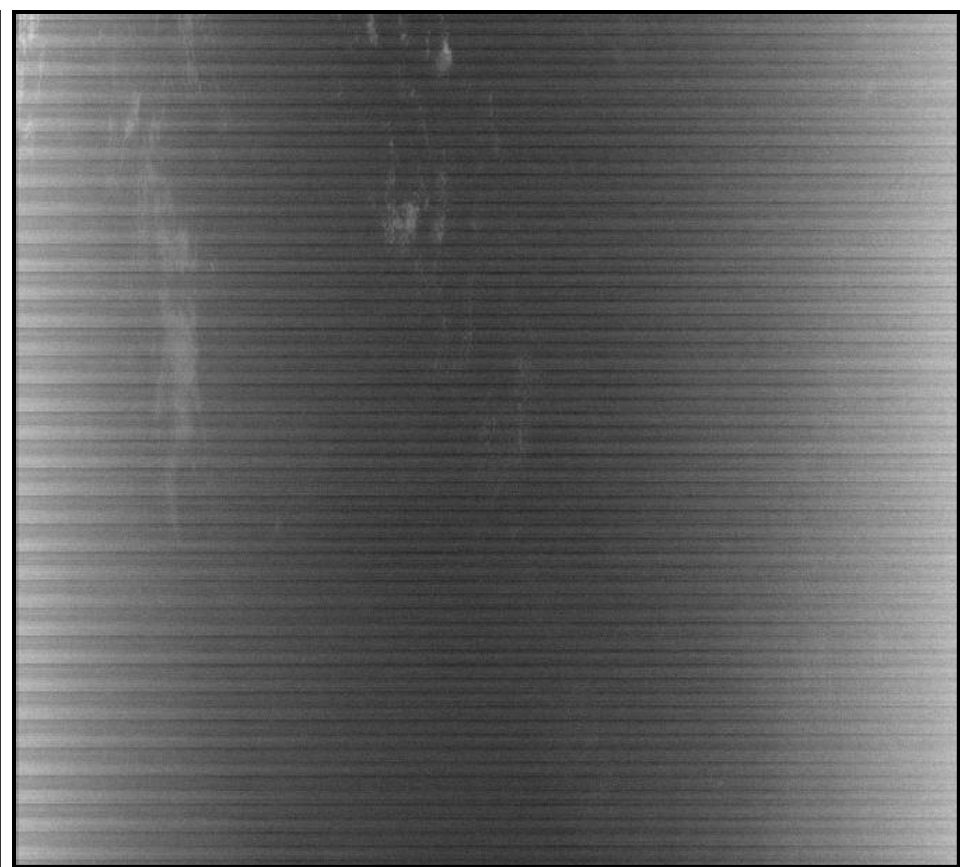
Aqua MODIS B35



Terra MODIS B35



Aqua MODIS B36



Terra MODIS B36